

iOS Deployment Release Notes

Table of Contents

Overview.....	5
Getting Started.....	6
Choosing an SDK.....	6
Snow Leopard.....	6
Lion & Mountain Lion.....	6
Configuring LiveCode.....	6
Configuring an iOS standalone.....	7
Testing in the iOS simulator.....	8
A first project.....	9
Building for a real device.....	9
Configuring an iOS Application.....	11
Setting plist options.....	11
Adding a splash image (personal and educational).....	13
Adding a default launch image (trial).....	14
Adding custom fonts.....	14
Adding custom externals.....	14
Copy files restrictions.....	14
Deployment Features.....	16
Standalone builder messages.....	16
Fast simulator deployment.....	16
General Engine Features.....	17
Engine version.....	17
What doesn't work.....	17
What does work.....	17
Debugging.....	18
Windowing and Stacks.....	18
System Dialogs – answer and ask.....	18
Non-file URL access.....	19
Out-of-bounds group scrolling.....	20
Externals.....	20
Snapshots.....	20
iOS-specific engine features.....	22
Multi-touch events.....	22
Mouse events.....	22
Motion events.....	22
Accelerometer support.....	23
File Attributes.....	23
Photo album and camera support.....	24
Taking or choosing photos.....	24
Saving photos to the users album.....	25
Keyboard Input.....	25
Configuring keyboard type.....	25
Activation notifications.....	26

Orientation handling.....	27
Auto-rotation support.....	27
Querying orientation.....	27
Controlling auto-rotation.....	27
Orientation changed notification.....	28
Initial orientation handling.....	28
Resolution handling.....	28
Location and heading tracking.....	29
Location tracking (GPS).....	29
Determining support.....	29
Activating and deactivating tracking.....	29
Detection location changes.....	29
Querying the location.....	30
Heading tracking (digital compass).....	30
Determining support.....	30
Activating and deactivating tracking.....	30
Detection heading changes.....	31
Querying the heading.....	31
Heading calibration.....	31
Sensor tracking.....	31
Sensor availability.....	32
Start tracking sensor.....	32
Stop tracking sensor.....	32
Sensor update messages.....	32
Getting a sensor reading.....	33
Email composition.....	33
Basic support.....	33
Advanced support.....	34
Text messaging support.....	35
File and folder handling.....	36
System alert support.....	37
Vibration support.....	37
Basic sound playback support.....	37
Multi-channel sound support.....	38
Playing Sounds.....	38
Channel Properties.....	39
Managing Channels.....	39
Audio session support.....	39
Video playback support.....	40
URL launching support.....	41
Font querying support.....	41
Visual effect support.....	41
Status bar configuration support.....	42
Locale and system language query support.....	42
Runtime environment querying.....	42
Modal Pick-Wheel support.....	43
Date picker support.....	44
Media picker support.....	44

Contact Access	45
UI Contact Access Features	45
Creating a Contact.....	45
Picking a Contact.....	45
Showing a Contact	45
Updating a Contact	45
Syntax Contact Access Features	46
Adding a Contact.....	48
Finding a Contact	48
Removing a Contact.....	48
Getting Contact Data	48
Idle Timer configuration.....	48
Querying camera capabilities.....	49
Clearing pending interactions.....	49
Managing redraws.....	50
Activity indicator.....	50
Busy indicator.....	51
Application icon badge support.....	51
Local notifications.....	51
Push notifications.....	52
Custom URL schemes.....	53
Network reachability checking (experimental).....	54
In App Advertising.....	55
Registering Your App Key.....	55
Creating & Managing Ads.....	55
Messages.....	56
In App Purchasing.....	57
Setup.....	57
Setup a Contract.....	57
Setup the In-App Purchase.....	57
Syntax.....	57
Commands & Functions.....	58
Messages.....	60
iOS Native Controls.....	60
All controls (UIView).....	61
Properties.....	61
Browser control – UIWebView.....	62
Properties.....	62
Actions.....	63
Messages.....	63
Scroller control – UIScrollView.....	64
Properties.....	64
Actions.....	66
Messages.....	66
Player control – MPMoviePlayerController.....	67
Properties.....	67
Actions.....	69
Messages.....	70

Input control – UITextField.....	70
Properties.....	70
Actions.....	73
Messages.....	73
Multi-line Input control – UITextView.....	74
Properties.....	74
Actions.....	78
Messages.....	78
Miscellaneous Information.....	80
Encryption Compliance – HTTPS.....	80
Noteworthy Changes.....	81
Scrolling problems (R18).....	81
Browser loadRequest changes (R18).....	81
URL progress parameter order (R18).....	81
Initial orientation handling (R20).....	81
Font metrics (R20).....	81
Out-of-bounds scrolling (R20).....	81
Screen metrics (R25).....	82
Multi-channel sound playback (R29).....	82
'Exits on Suspend' support (R30).....	82
Engine version integration (4.6.1-dp-2).....	82
Engine internal structure update (5.5.2-dp-1).....	83
Simulator support (5.5.3-rc-1).....	83
Change Logs and History.....	84
Engine Change History.....	84
iOS Deployment Change History.....	94
Document History.....	97

Overview

LiveCode now incorporates facilities for deploying to iOS. These facilities include the ability to build iOS applications that run in a variety of simulator versions as well as on iPhone, iPod Touch and iPad devices.

In addition to supporting many of the desktop engine's features, the iOS engine hooks into many iOS-specific features. Please see the *iOS Specific Features* section for more details.

For information on what parts of the Desktop feature set are currently implemented when deploying to iOS, please see the *What Works* section.

Note: *If you have not purchased the iOS deployment pack, you can still try out iOS deployment features, but any built apps will have a forced banner for 5 seconds on startup, and will quit after one minute.*

Note: *iOS deployment is only supported on Macs running the latest versions of Snow Leopard and requires installation of an appropriate iOS SDK.*

Getting Started

Choosing an SDK

Before you can use iOS deployment, you need to install the appropriate iOS SDKs available from Apple.

In order to get the iPhone SDK, you need to be 'registered iPhone developer'. You can register for this and download the SDK by visiting:

<http://developer.apple.com/ios>

LiveCode recommends the following set up:

Platform	Xcode	SDK	Simulators Included
Snow Leopard	4.2	5.0	5.0, 4.3
Lion & Mountain Lion	4.6	6.1	6.1, 6.0, 5.1, 5.0
	4.4	5.1	5.1, 5.0

Make sure you have at least one SDK installed, otherwise you will not be able to use the iOS deployment feature.

***Note:** As a registered iOS developer you will be able to develop and run applications in the iPhone Simulator **only**. To build applications that can be run on an actual device you will need to enroll in the iOS Developer Programme.*

Snow Leopard

When running on Snow Leopard, LiveCode uses the iOS 5.0 SDK to produce device builds. This is available as part of Xcode 4.2.

The 4.3 and 5.0 simulators are supported on Snow Leopard.

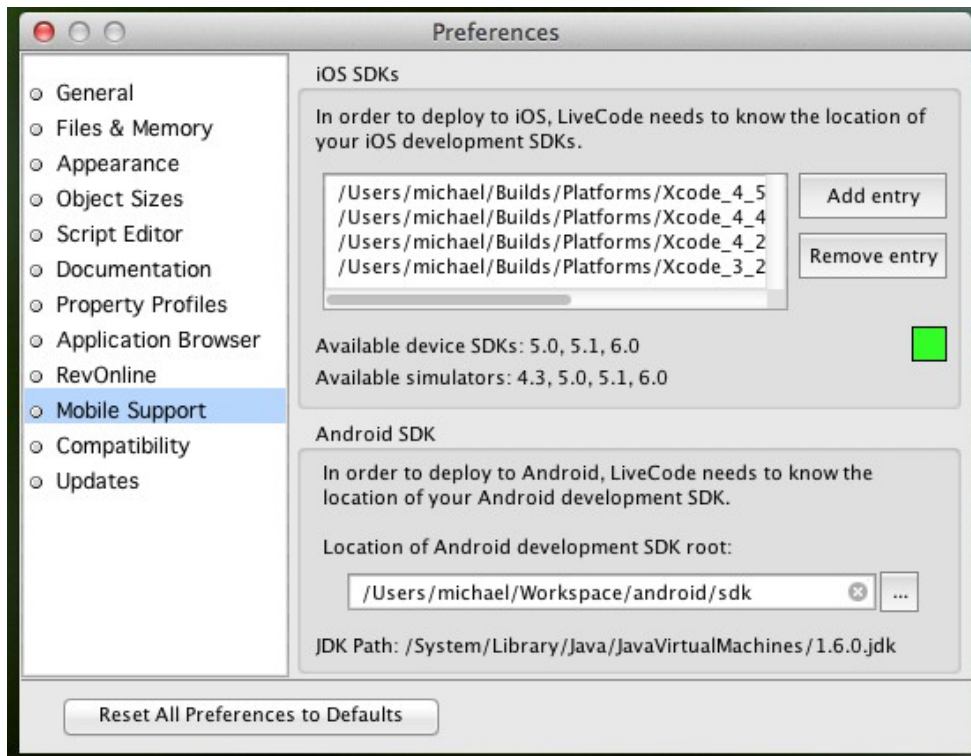
Lion & Mountain Lion

When building for Arm v7 devices, LiveCode uses the iOS 6.1 SDK, available as part of Xcode 4.6. When building for Arm v6 devices, LiveCode uses the iOS 5.1 SDK, available as part of Xcode 4.4. If you wish to produce universal device builds (including both Arm v6 and Arm v7 instructions) you must have the iOS 5.1 and iOS 6.1 SDKs installed.

The 5.0, 5.1, 6.0 and 6.1 simulators are supported on Lion & Mountain Lion.

Configuring LiveCode

After you have installed an iOS SDK, it is necessary to tell LiveCode where to find it (or them, if you have installed more than one).



To configure the paths to your installed SDKs, use the *Mobile Support* panel in *Preferences*.

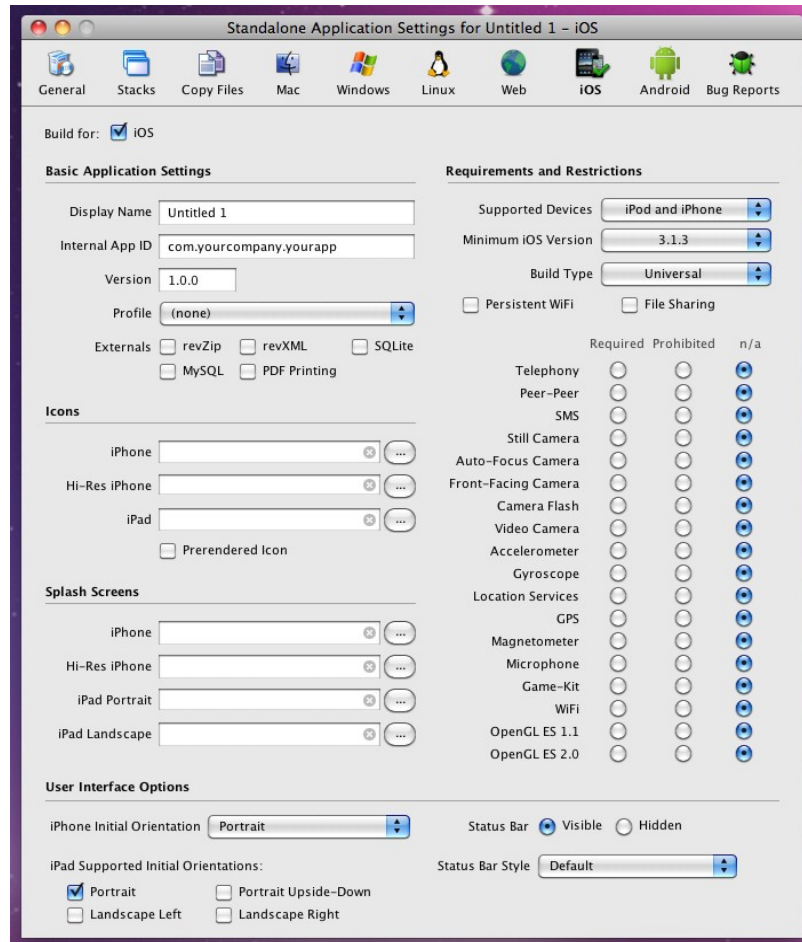
Use this pane to choose the correct SDK paths by using the 'Add entry' button. You should choose the folder you selected when installing the SDK (for Xcode versions 4.2 and earlier) or the Xcode app bundle (for Xcode version 4.3 and later).

When you have successively chosen your SDK(s), the list of simulators and SDKs that you will have available will be updated.

Note: On startup if SDKs have not been previously configured, LiveCode will check to see if there is a recognised SDK at */Developer* and */Applications*.

Configuring an iOS standalone

To configure a stack for iOS, you use the new iOS deployment pane in the *Standalone Application Settings* dialog, available from the *File* menu:



This pane allows you to set the iOS-specific options for your application. You can also add files you wish to be included in the bundle using the *Copy Files* pane, and set the (bundle) name of your application on the *General* pane.

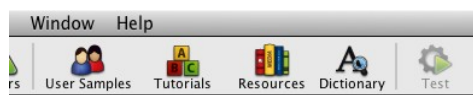
To make a stack build for iOS, simply check the *Build for iOS* button and configure any options that you wish.

Note: Making a stack build for iOS disables building for any other platform, however this is only true of the standalone's mainstack. If you wish to share code and resources among platforms, simply factor your application into multiple stacks, using a different mainstack for iOS and desktop targets.

Note: The Inclusions, Copy Referenced Files, Bug Reports and Stacks features are **not** available when building for iOS. If you wish to include multiple stackfiles in your application, use the Copy Files feature instead.

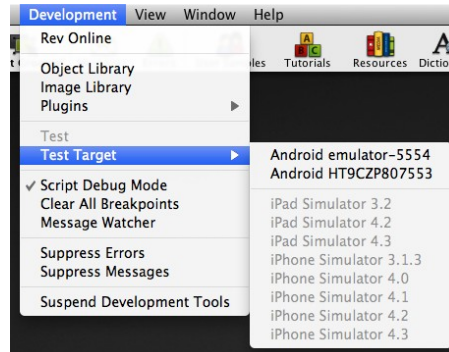
Testing in the iOS simulator

Once you have a stack configured for iOS, you can run it in the iOS Simulator by using the *Test* button on the menubar:



This button will be enabled for any stack that has been configured for iOS deployment, and clicking it will launch the stack in the simulator, terminating a running simulation if any.

You can also access the *Test* action from the Development menu. Additionally this is where you can configure which target iOS simulator to use:



Here you can choose which simulated device to use for iOS testing. Any setting you choose here will take effect the next time you use the *Test* button or menu-item.

Note: If the *Test* button or menu-item remains disabled, even if you have configured a stack for iOS deployment, it probably means you haven't configured your SDKs correctly. In this case, check that there are available simulators in the Mobile Support pane of Preferences.

A first project

Once you have installed an iOS SDK and configured LiveCode for it, it is easy to run a simple project:

1. Create a new main stack via **File > New Mainstack**.
2. Rename your new main stack to *Hello World*
3. Drag and drop a button onto the new main stack, and call it *Click Me*
4. Edit the *Click Me* button script and enter the following:

```
on mouseUp
  answer "Hello World!" with "ok"
end mouseUp
```

5. Save the *Hello World* stack.
6. Bring up the *Standalone Application Settings* dialog from the *File* menu, switch to the iOS pane and make sure 'Build for iOS' is checked.
7. Make sure your test stack is active and then click *Test* on the menubar.
8. Click the *Click Me* button in the simulator to see your script in action!

You can try the stack out in different versions of the simulator, simply by selecting the version you want from the *Development* menu.

Building for a real device

Before you can begin testing your application on a real device, you will need to have several things in place:

1. Enrolment in the *iPhone Developer Programme*: this is required so that you can generate the necessary certificates and profiles.
2. A *iPhone Developer Certificate*: this is installed on your development machine and is used to digitally sign the application you wish to put onto an iPhoneOS device. Follow the instructions on the *Certificates* tab of the *iPhone Developer Program Portal*.
3. Registration of at least one iPhoneOS device in the program portal. You can add devices using the *Devices* tab of the *iPhone Developer Program Portal*.
4. An App ID for your application. You can create App IDs using the *App IDs* tab of the *iPhone Developer Program Portal*. (Note that at this stage it isn't necessary for you to have a separate App ID for every app – you can use a single id for all your apps for testing/development purposes.)
5. A provisioning profile tying together your test device's id, you app id and your certificate. These can be created using the *Provisioning* tab of *iPhone Developer Program Portal*.

Once you have all these things ready, you should find that the 'Profile' drop-down menu in the iOS pane of the *Standalone Settings* dialog is populated with any provisioning profiles you have installed.

With a suitable profile chosen, you can simply use the *Save as Standalone Application...* item in the *File* menu to build an iOS app bundle in the same way as you would build a standalone for any other platform.

The next thing to do is to install the bundle on your test device. To do this, start up Xcode, and choose **Window > Organizer**. This will bring an interface allowing you to manage the applications, devices and profiles you are using for development.

Next, make sure you have your test device connected to your machine and choose it from the left hand list. If you haven't used the device for development before, you will be prompted to do so, and you'll then be presented with a list of installed applications.

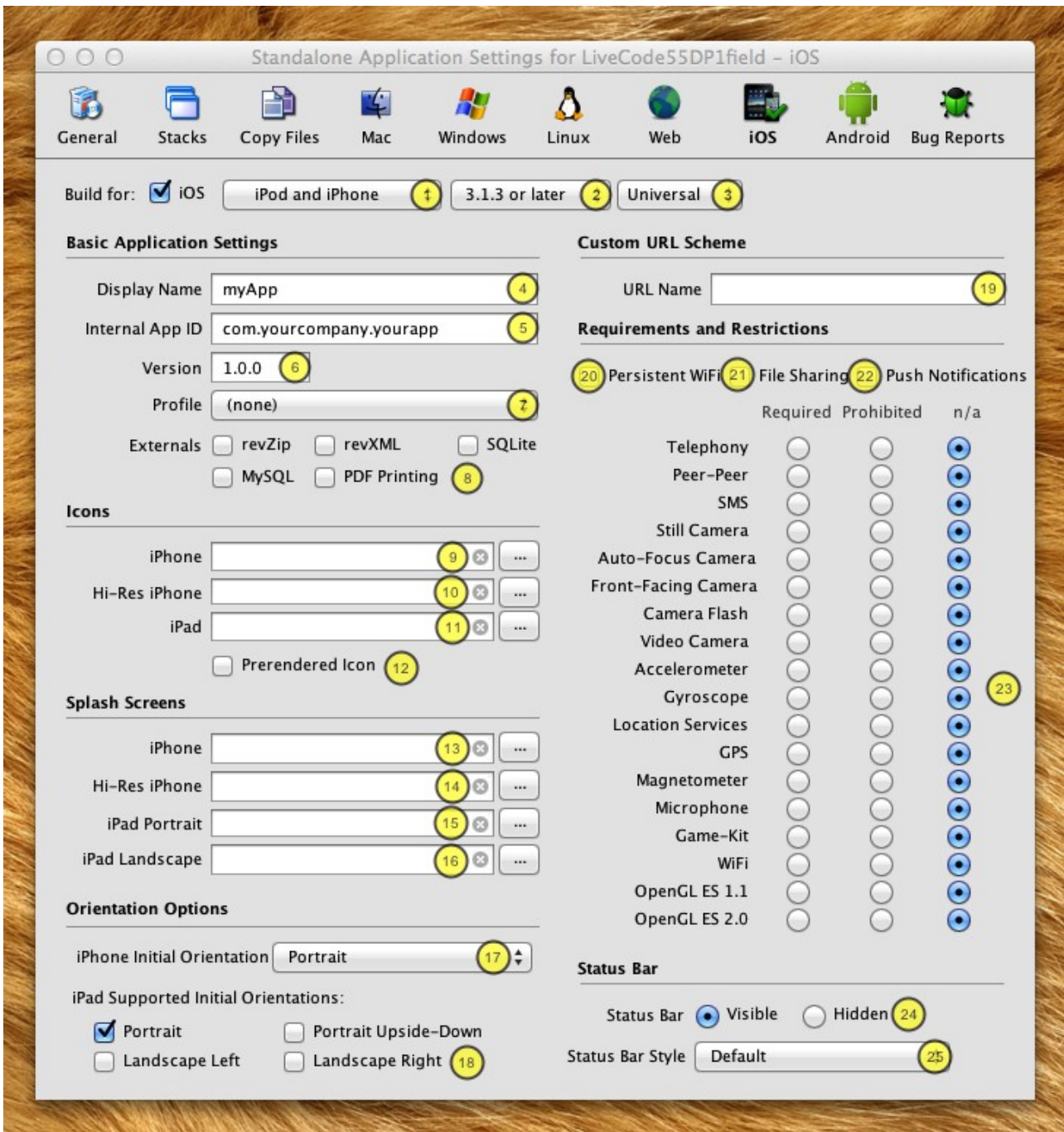
To get your newly prepared application on the device, simply drag the application bundle from the desktop into the *Applications* list – opting to install the appropriate provisioning profile if it has not been previously installed on the device.

Finally, navigate to the application on your device, and start it up!

Configuring an iOS Application

Setting plist options

All iOS applications have a plist that is built into the application bundle which controls many aspects of the applications requirements and functionality. To set the plist up, you simply use the options presented in the Standalone Builder's iOS pane, these will be used to construct a suitable plist automatically:



Here the numbered items are as follows:

1. The devices supported by the application, iOS uses this to determine if an application should launch on iPod/iPhones and whether it should run in iPod/iPhone emulation mode on iPads (UIDeviceFamily).
2. The minimum iOS version required by the application (MinimumOSVersion)
3. The instruction set to build for. Universal will build for both Arm v6 and Arm v7 devices (but will subsequently produce a larger app). Arm v6 builds will run on both Arm v6 and Arm v7 devices. Arm v7 builds will only run on Arm v7 devices.
4. The string to display as the label of the application on the SpringBoard (CFBundleDisplayName).
5. The bundle identifier to use for the application, in conjunction with the App Id present in a provisioning profile, this uniquely identifies an application (CFBundleId).
6. The version of the application (CFBundleVersion).
7. The provisioning profile to use when building the application to run on a device.
8. The extensions to include in the application:
 - i. Choose 'revZip' if you are using any of the revZip commands and functions.
 - ii. Choose 'revXML' if you are using any of the revXML commands and functions.
 - iii. Choose 'SQLite' if you are using revDB along with the dbSQLite database driver.
 - iv. Choose 'MySQL' if you are using revDB along with the dbMySQL database driver.
 - v. Choose 'PDF Printing' if you are using 'open printing to PDF'.
9. The icon to display on the iPhone and iPod SpringBoard (CFBundleIconFile and CFBundleIconFiles). This icon should be 57x57 pixels.
10. The icon to display on the Hi-Res iPhone and Hi-Res iPod SpringBoard (CFBundleIconFile and CFBundleIconFiles). This icon should be 114x114 pixels.
11. The icon to display on the iPad SpringBoard (CFBundleIconFile and CFBundleIconFiles). This icon should be 72x72 pixels.
12. Determines whether the SpringBoard icon already has a tint and gloss applied. (UIPrerenderedIcon).
13. The iPhone and iPod image to use as the launch image (commercial), or the image to incorporate as the splash image (personal and educational), see *Adding a default launch image* or *Adding a splash image* for more details. This image should be 320x480 pixels and rotated to the initial iPhone orientation setting.
14. The Hi-Res iPhone and Hi-Res iPod image to use as the launch image (commercial), or the image to incorporate as the splash image (personal and educational), see *Adding a default launch image* or *Adding a splash image* for more details. This image should be 640x960 pixels and rotated to the initial iPhone orientation setting.
15. The portrait iPad image to use as the launch image (commercial), or the image to incorporate as the splash image (personal and educational), see *Adding a default launch image* or *Adding a splash image* for more details. This image should be 768x1024 pixels and rotated to the initial iPhone orientation setting.

16. The landscape iPad image to use as the launch image (commercial), or the image to incorporate as the splash image (personal and educational), see Adding a default launch image or Adding a splash image for more details. This image should be 1024x768 pixels and rotated to the initial iPhone orientation setting.
17. The initial iPhone and iPod orientation to start the application up in.
18. The set of supported iPad initial orientations. This is used to determine which splash screen will be displayed.
19. The name of the URL scheme used to reference your application uniquely.
20. Determines whether the application requires a persistent WiFi connection (UIRequiresPersistentWiFi).
21. Determines whether the 'Shared Files' feature of iTunes is enabled for this application (UIFileSharingEnabled).
22. Determines whether your application can receive push notifications.
23. These options determine what facilities the application requires or prohibits on the device in order to be launched (UIRequiredDeviceCapabilities).
24. The initial visibility state of the status bar (UIStatusBarHidden).
25. The initial status bar style (UIStatusBarStyle).

More details of the plist options can be found in the [iOS Reference Document](#).

Adding a splash image (personal and educational)

If you are using a personal or educational license, then you are restricted in what can be displayed as the launch image. In this case you should provide a (square) PNG image that will be placed inside a LiveCode branded banner (see below).

The plugin automatically generates a collection of launch images using this image depending on the target device settings you have specified in the plist.

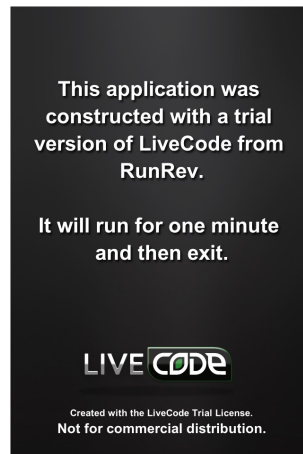
We recommend providing an image of 600x600 for the splash – this will give good results when resampled at the various resolutions and sizes required by the different iOS devices.

Note: *With these license types, the generated launch image will remain on screen for 5 seconds before being dismissed.*



Adding a default launch image (trial)

If you are evaluating the iOS deployment feature using a trial license, then you cannot configure a splash or launch image. Instead, all such applications will be built with the following launch image:



This image will remain on screen for 5 seconds before the application launches, and the application will quit after one minute.

Adding custom fonts

In iOS 3.2 and later, the ability was introduced to allow applications to bundle custom fonts which then become available to the app (and only that app) while it is running.

To take advantage of this feature, all you need to do is reference the files of any fonts you wish to include in the *Copy Files* pane. These files can either be a direct file reference, or contained in one of the folder references. The Standalone Builder will treat any files that end with the extension *ttf* or *ttc* as font files to use in this way.

Any fonts included in this way will appear in *the fontNames* and can be used in the same way as any other font on the system.

Important: Make sure you have an appropriate license for the fonts you choose to bundle with your app like you would any other media such as sounds, images and videos.

Adding custom externals

For full details of the iOS Externals interface click the following link:

<http://www.runrev.com/developers/documentation/externals-sdk/>

Copy files restrictions

It appears that (at least) the simulator does not like specific folder names being present at top-level inside the app-bundle. In particular, attempting to copy files in that result in a top-level folder called 'resources' (any case) will cause simulation to fail.

To help identify these cases, the Copy Files pane will warn you when you add files that could cause this issue. Additionally, when an app is built (either for simulation or for deployment) an appropriate error message will be displayed and the operation will cease.

Note: *At this stage we do not know if this problem is limited to 'resources' or whether there are others too. If you find you get an 'unknown error' when trying to simulate, try renaming some of your top-level 'copy files' folders and see if it goes away. If it does please let us know what folder names caused the problem so we can add them to our checks.*

Deployment Features

Standalone builder messages

When building a mobile application for either a device (through *Save as standalone*) or for simulation (by clicking *Simulate*), messages are sent to the application's main-stack to notify it before building starts, and after build has finished.

Before the application is built the following (optional) message is sent:

savingMobileStandalone *targetType, appBundle*

Where *targetType* is either "simulator" or "device", depending on the type of build; and *appBundle* is the path of the application bundle being built.

After the application is built (but before being launched in the simulator), the following (optional) message is sent:

mobileStandaloneSaved *targetType, appBundle*

Where the parameters are the same as before except if the build failed, in which case *appBundle* will be empty.

Note that if you make changes to the stack in *savingMobileStandalone* that you want to appear in the built application, you must save the stack before returning from the handler. The mobile standalone builder uses the stackfile as it is on disk after return from the message to build the app.

Fast simulator deployment

Building for the iOS simulator is now substantially faster for large projects.

Any resources listed in *Copy Files* are no longer copied into the app-bundle. Instead, the iOS simulator engine is able to automatically and transparently use any assets specified directly from their original locations on the host machine.

In particular, from the point of view of the simulated app, any included files and folders appear as if they are, in fact, part of the application bundle – just as they would do if they had been explicitly copied.

Note: *One side-effect of this is that changes to any assets while an app is running in the simulator may have an impact on it; just as it would in the IDE.*

Note: *This feature is currently only supported when running in the simulators for iOS 4.0 and later. When running in the 3.2 or 3.1.3 simulators, the old (slow) method of copying files will still used.*

General Engine Features

Engine version

The iOS engine version is in step with desktop engine version and build number. A substantial subset of the the desktop feature set is available, together with a library of mobile specific functionality.

What doesn't work

The following features have no effect:

- clipboard related syntax and functionality (planned for a future release)
- printing syntax and functionality (planned for a future release)
- setting the mouseLoc (no support on mobile devices)
- socket syntax and functionality (planned for a future release)
- dbPostgreSQL, dbODBC and custom externals (planned for a future release)
- industrial strength encryption and public key cryptography (planned for a future release)
- dbMysql SSL support (planned for a future release)
- paint tools (planned for a future release)
- audioclips/videoclips/player functionality (use the 'play' and 'play video' syntax described later)
- revBrowser (use native browser control instead)
- revFont (use 'custom font inclusion' mechanism instead)
- drag-drop related syntax and functionality (no support on mobile devices)
- backdrop related syntax and functionality (no support on mobile devices)
- cursor related syntax and functionality (no support on mobile devices)
- revSpeak (no support on iOS)

What does work

The following things do work as expected:

- rendering of controls with non-system themes (default is Motif theme)
- date and time handling
- gradients, graphic effects and blending
- any non-platform, non-system dependent syntax (maths functions, string processing functions, behaviors etc.)
- revZip, revXML, dbSqlite and dbMysql

Debugging

At present the options available for debugging applications running on target devices is limited. Obviously, scripts will work in a similar fashion between Desktop and Mobile so this helps.

There is, however, a simple means of logging from an emulated target device. The LiveCode command form:

put *string*

Will write the string out to the standard error stream. These messages will be visible in *Console.app* when running in the simulator, and in the *Console* tab of the Xcode *Organizer* for a given target device while it is connected to the host computer.

Windowing and Stacks

The mobile engine uses a very simple model for window management: only one stack can be displayed at a time.

The stack that is displayed is the most recent one that has been targeted with the **go** command.

The currently active stack will be the target for all mouse and keyboard input, as well as be in receipt of a **resizeStack** message should the orientation or layout of the screen change.

The **modal** command can also still be used, and will cause the calling handler to block until the modal'ed stack is closed as with the normal engine. Note, however, that performing a further **go stack** from a modal'ed stack will cause the new stack to layer above the modal stack – this will likely cause many headaches, so it is probably best to avoid this case!

At this time menus and other related popups will not work correctly, as these are implemented in the engine (essentially) as a specialized form of **go stack** they will cause the current stack to be overlaid completely, with various undesirable side-effects.

Note: The 'go in window' form of the 'go stack' command will not work correctly in the iOS and must not be used. Since there is only one stack/window displayed at once on this platform, a generic 'go stack' should be used instead.

System Dialogs – answer and ask

The iOS engine supports a restricted version of the *answer* and *ask* commands – both using the system-provided `UIAlertView` class.

The answer command can be used in this form:

answer *message* [**with** *button* **and** ...] [**titled** *title*]

This will use the iPhone standard alert popup with the given buttons and title. The last button specified will be marked as the default button.

The ask command can be used in this form:

ask [**question** | **password**] *prompt* [**with** *initialAnswer* | **with** *hint* *hint*] [**titled** *title*]

If neither question nor password is specified, question is assumed. The value entered by the user will be returned in *it*. If the user cancelled the dialog, **the result** will contain *cancel*.

The *hint* can be used to specify background text that will disappear as soon as the user enters data.

The *hint* will never be returned.

The text field present in the ask dialog will use the current keyboard type as set by the `iPhoneSetKeyboardType` command.

Note: You cannot nest calls to ask/answer on iOS. If you attempt to open an ask or answer dialog while one is showing, the command will return immediately as if the dialog had been cancelled.

Non-file URL access

The iOS engine has support for fetching urls, posting to urls and downloading urls in the background. Note that the iOS engine does not support `libUrl`, and as such there are some differences between url handling compared to the desktop.

The iOS engine supports the following non-file URL access methods:

- GET for http, https and ftp URLs
- POST for http and https URLs
- PUT for ftp URLs

Note: When using URLs for these protocols be aware that the iOS system functions used to provide them are much stricter with regards the format of URLs – they must be of the appropriate form as specified by the RFC standards. In particular, in FTP urls, be careful to ensure you urlEncode any username and password fields appropriately (`libUrl` will allow characters such as '@' in the username portion and still work – iOS will not be so forgiving).

To fetch the google home page you can do:

```
put url ("http://www.google.com") into tGooglePage
```

To post data to a website, you can use:

```
post tData to url tMyUrl
```

To upload a file to an FTP server you can use:

```
put tData into url "ftp://ftp.myftpserver.com"
```

To download a url in the background, you can use:

```
load url tMyUrl with message "myUrlDownloadFinished"
```

Note that, the callback message received after a **load url** will be of the form:

```
myUrlDownloadFinished url, status, data
```

Here, *data* is the actual content of the url that was fetched (assuming an error didn't occur).

Progress updates on ongoing url requests are communicated via the *urlProgress* message. This message is periodically sent to the object whose script initiated the operation. It can have the form:

```
urlProgress url, "contacted"
urlProgress url, "requested"
urlProgress url, "loading", bytesReceived, [ bytesTotal ]
urlProgress url, "uploading", bytesReceived, [ bytesTotal ]
urlProgress url, "downloaded"
```

urlProgress *url*, "uploaded"

urlProgress *url*, "error", *errorMessage*

Note that `pBytesTotal` will be empty if the web server does not send the total data size.

You can also download a url direct to a file – this is particularly useful when downloading large files since the normal 'url' chunk downloads into memory. To do this use:

libUrlDownloadToFile *url*, *filename*

Unlike the `libUrl` command of the same name, this command will block until the download is complete, and will notify progress through the **urlProgress** message as described above.

When using GET and POST with http(s) URLs you can use the `httpHeaders` global property to configure the headers to send. This works the same as the desktop engine, any specified headers overriding those of the same key that would normally be sent, and any new keys being appended.

Note: The order of the arguments passed to urlProgress changed in revision 18, to make them consistent with other callbacks, and also with the libUrl status callback.

Out-of-bounds group scrolling

Two properties `unboundedHScroll` and `unboundedVScroll` now enable you to configure whether scroll values for a group can be set to values outside of the actual content bounds. This makes it much easier to support the standard iOS bouncing features in scrollers.

This change has been made to both the iOS engine, and the main desktop engine. See the main release notes for more details.

Externals

The `revZip`, `revXML`, `dbSqlite` (via `revDB`) and `dbMysql` (via `revDB`) externals can now be used on iOS.

To include these components, simply check the appropriate boxes on the iOS Standalone Settings Pane.

Snapshots

The iOS engine supports both the object and screen snapshot variants of the import and export snapshot commands.

To fetch a snapshot of an object use:

import snapshot from [**rectangle** *rect of*] *object*

export snapshot from [**rectangle** *rect of*] *object*

To fetch a snapshot of the screen use:

import snapshot from rectangle *rect*

export snapshot from rectangle *rect*

In the screen snapshot case, co-ords are given relative to the top-left of the screen and include the status bar.

Note: *There does not seem to be a way to render the status bar without using private features of the iOS API. Therefore, if your snapshot rectangle includes part of the screen where the status bar is, it will be clipped out.*

iOS-specific engine features

This version of the LiveCode iOS engine includes a wide-range of features specific to iOS devices. These are described in the following sections.

Multi-touch events

Touches can be tracked in an application by responding to the following messages:

- **touchStart** *id*
- **touchMove** *id, x, y*
- **touchEnd** *id*
- **touchRelease** *id*

The *id* parameter is a number which uniquely identifies a sequence of touch messages corresponding to an individual, physical touch action. All such sequences start with a **touchStart** message, have one or more **touchMove** messages and finish with either a **touchEnd** or a **touchRelease** message.

A **touchRelease** message is sent instead of a **touchEnd** message if the touch is cancelled due to an incoming event such as a phone-call.

No two touch sequences will have the same *id*, and it is possible to have multiple (interleaving) such sequences occurring at once. This allows handling of more than one physical touch at once and, for example, allows you to track two fingers moving on the iPhone's screen.

The sequence of touch messages is tied to the control in which the touch started, in much the same way mouse messages are tied to the object a mouse down starts in. The test used to determine what object a touch starts in is identical to that used to determine whether the pointer is inside a control. In particular, invisible and disabled controls will not be considered viable candidates.

Mouse events

The engine will interpret the first touch sequence in any particular time period as mouse events in the obvious way: the start of a touch corresponding to pressing the primary mouse button, and the end of a touch corresponding to releasing the primary mouse button.

This means that all the standard LiveCode controls will respond in a similar way as they do in the desktop version – in particular, you will receive the standard mouse events and *the mouseLoc* will be kept updated appropriately.

Note that touch messages will still be sent, allowing you to choose how to handle input on a per-control basis.

Motion events

An application can respond to any motion events generated by iPhoneOS by using the following messages:

- **motionStart** *motion*

- **motionEnd** *motion*
- **motionRelease** *motion*

Here *motion* is the type of motion detected by the device. As of iPhoneOS 3.0, the only motion that is generated is "shake".

When the motion starts, the current card of the defaultStack will receive **motionStart** and when the motion ends it will receive **motionEnd**. In the same vein as the touch events, **motionRelease** is sent instead of **motionEnd** if an event occurs that interrupts the motion (such as a phone call).

Accelerometer support

Note that as of 5.5-dp-1, this syntax has been deprecated in favour of the new generic sensor syntax. See the section “Sensor tracking”.

You can enable or disable the iPhone's internal accelerometer by using:

```
iphoneEnableAccelerometer [ interval ]
iphoneDisableAccelerometer
```

Enabling the accelerometer will cause **accelerationChanged** events to be delivered to the current card of the defaultStack at the specified interval. The interval should be specified in seconds, and is the approximate time between delivery of messages. Note that the interval is constrained by hardware-specific minimums and maximums (which are left unspecified by Apple).

The **accelerationChanged** message takes four parameters (*Note this has changed from a single parameter in 5.5-dp-1*):

```
x,y,z,t
```

Here x, y and z are the acceleration along those axes relative to gravity. The t value is a relative measurement of how much time has passed – you can use the difference between the time values in two **accelerationChanged** events to give an indication of how much time passed between the samples.

File Attributes

Use the **iphoneSetDoNotBackupFile** command to set a flag specifying whether a file should be backed up by iOS, or not.

```
iphoneSetDoNotBackupFile filename, [doNotBackup]
```

Here *filename* is the path to the file, and *doNotBackUp* is a boolean value. Set to true if you wish the file not to be backed up to cloud storage, false otherwise.

You can check the do not back up attribute of a file at any time using the function **iphoneDoNotBackupFile**.

```
iphoneDoNotBackupFile(filename)
```

Use the **iphoneSetFileDataProtection** command to set the data protection level of a file.

```
iphoneSetFileDataProtection filename, dataProtection
```

Here, *dataProtection* can be one of the following:

- **none** - No protection

- **complete** - The file is not accessible, for read or write, while the device is locked.
- **complete unless open** - The file is fully protected when the device is locked, unless it was already open.
- **complete until first user authentication** - The file is fully protected until the user unlocks the device for this first time.

To fetch the data protection attribute of a file, use the function **iphoneFileDataProtection**.

iphoneFileDataProtection(filename)

The message **protectedDataDidBecomeAvailable** will be sent to the current card when the device is unlocked and protected data files are available again. Handle the **protectedDataDidBecomeAvailable** message if you want to reopen connections to files that have been protected using the `iphoneFileDataProtection` function when the device is unlocked.

Photo album and camera support

Taking or choosing photos

You can hook into iOS's native photo picker by using

iPhonePickPhoto *source*, [*maxwidth*, [*maxheight*]]

Here *source* is one of:

- *library* – the photo is taken from the device's photo library
- *camera* – a photo is taken using the device's default camera
- *rear camera* – a photo is taken using the device's rear camera (if present)
- *front camera* – a photo is taken using the device's front camera (if present)
- *album* – the photo is taken from the device's recent camera roll

The *maxwidth* and *maxheight* parameters constrain the maximum size of an image. The chosen image will be scaled down proportionally to fit within the size specified. If either size specified is 0, then the parameter is ignored.

If the source type isn't available on the target device, the command will return with result *"source not available"*. If the user cancels the pick, the command will return with result *"cancel"*. Otherwise a new image object will be created on the current card of the default stack containing the chosen image.

When running on an iPhone, the photo-picker is displayed using the standard iOS fullscreen overlay view.

When running on an iPad, the photo-picker is displayed using a standard iOS pop-over. In this case, the pop-over is positioned relative to **the rect of the target** at the time the `iphonePickPhoto` command was called.

Note: *The image object is cloned from the `templateImage`, so you can use this to configure settings before calling the picker.*

Saving photos to the users album

You can save an image to the user's photo album by using:

iphoneExportImageToAlbum *imageTextOrControl*

Where *imageTextOrControl* is one of:

- the binary data of an image (the 'text') in PNG, GIF or JPEG format
- a long id of an image object containing an image in PNG, GIF or JPEG format

The command will return empty in **the result** if exporting succeeded. Otherwise it will return one of:

- *could not find image* – the image object could not be found
- *not an image* – the object was not an image
- *not a supported format* – the image object in not of PNG, GIF or JPEG format
- *export failed* – an error occurred while trying to save the image to the album

If the device has a camera, the image is saved to the *Camera Roll*, other wise it is saved to the *Saved Photos* album.

Note: *When running in the simulator, there needs to be at least one image in the photo album for exporting to succeed. You can add images to the photo album in a simulator by dragging an image on the simulator window, and saving the image to album from Safari (click and hold on the image to bring up an alert with the option).*

Keyboard Input

Surprisingly, the SDK does not provide direct control over the iPhoneOS software keyboard. However, an attempt has been made to provide some level of support for text input entry. If you have a text field which is focusable (**traversalOn** true), then whenever it has focus the iPhone keyboard will appear and allow basic text editing functionality.

While it is possible to use the non-Roman keyboards to enter text, for scripts which have combining and/or input method type requirements the input will be incorrect. For example, languages such as Russian can be entered correctly, but Korean will not work as expected.

The auto-capitalization, auto-correction, copy/paste, undo/redo and selection point magnification features that are present in standard iPhone text entry fields are not supported.

Configuring keyboard type

You can configure the type of keyboard that will be displayed by using the **iphoneSetKeyboardType** command:

iphoneSetKeyboardType *type*

Where *type* is one of:

- default – the normal keyboard
- alphabet – the alphabetic keyboard
- numeric – the numeric keyboard with punctuation

- url – the url entry keyboard
- number – the number pad keyboard
- phone – the phone number pad keyboard
- contact – the phone contact pad keyboard
- email – the email keyboard
- decimal – the decimal numeric pad keyboard (iOS 4.1+)

The keyboard type setting takes effect the next time the keyboard is shown – *it does not affect the currently displaying keyboard, if any.*

Similarly you can configure the type of return key displayed on the keyboard using the **iphoneSetKeyboardReturnKey** command:

iphoneSetKeyboardReturnKey *returnKey*

Where *returnKey* is one of:

- default – the normal return key
- go – the 'Go' return key
- google – the 'Google' return key
- join – the 'Join' return key
- next – the 'Next' return key
- route – the 'Route' return key
- search – the 'Seach' return key
- send – the 'Send' return key
- yahoo – the 'Yahoo' return key
- done – the 'Done' return key
- emergency call – the 'emergency call' return key

Again, setting the return key only takes effect the next time the keyboard is shown.

If you wish to configure the keyboard options based on the field that is being focused, simply use the commands in an *openField* handler of the given field. The keyboard is only shown after this handler returns, so it is the ideal time to configure it.

Activation notifications

The following messages will be sent to the current card of the default stack when the keyboard is shown or hidden:

keyboardActivated

keyboardDeactivated

Handle these messages to move controls or change the display layout to take account of the restricted screen area that will be available.

Orientation handling

The iOS engine includes support for automatic handling of changes in orientation and in so doing gains use of the smooth iOS standard animation rotation animation (note this replaces the previous approach of using *iphoneRotateInterface* which no longer does anything).

*Example: You can find a simple stack using the orientation handling features in the IDE resources folder (open using the **Help > Example Stacks and Resources** menu item). The stack can be found at: **Mobile Examples/Orientation Example.livecode***

Auto-rotation support

You can configure which orientations your application supports, and also lock and unlock changes in orientation.

The engine will automatically rotate the screen whenever the following are true.

- it detects an orientation change
- the orientation is in the currently configured 'allowed' set
- the orientation lock is off

Such a rotation may result in a *resizeStack* message being sent since rotating at 90 degrees switches width and height.

Querying orientation

You can fetch the current device orientation using the **iphoneDeviceOrientation()** function. This returns one of:

- *unknown* – the orientation could not be determined
- *portrait* – the device is being held upward with the home button at the bottom
- *portrait upside down* – the device is being held upward with the home button at the top
- *landscape left* – the device is being held upward with the home button on the left
- *landscape right* – the device is being held upward with the home button on the right
- *face up* – the device is lying flat with the screen upward
- *face down* – the device is lying flat with the screen downward

Similarly, you can fetch the current interface orientation using the **iphoneOrientation()** function. This returns one of *portrait*, *portrait upside down*, *landscape left* and *landscape right*. With the same meanings as for device orientation.

Controlling auto-rotation

To configure which orientations your application supports use:

iphoneSetAllowedOrientations *orientations*

Here *orientations* must be a comma-delimited list consisting of at least one of *portrait*, *portrait upside down*, *landscape left* and *landscape right*. The setting will take effect the next time an

orientation change is effected – the interface's orientation will only be changed if the new orientation is among the configured list. You can query the currently allowed orientations with the **iphoneAllowedOrientations()** function.

To lock or unlock orientation changes for a time use:

iphoneLockOrientation and **iphoneUnlockOrientation**

The orientation lock is nestable, and when an unlock request causes the nesting to return to zero, the interface will rotate to match the devices current orientation (assuming it is in the set of allowed orientations). You can query the current orientation lock state with the **iphoneOrientationLocked()** function.

Orientation changed notification

An application will receive an *orientationChanged* message if the device detects a change in its position relative to the ground, and you can use the **iphoneDeviceOrientation()** function to find out the current orientation. This message is sent to the current card of the default stack.

The *orientationChanged* message is sent **before** any automatic interface rotation takes place thus changes to the orientation lock state and allowed set can be made at this point and still have an effect. If you wish to perform an action after the interface has been rotated, then either do so on receipt of *resizeStack*, or by using a *send in 0 millisecs* message.

Initial orientation handling

On startup, the engine reads the settings of 'initial orientation' and 'supported orientations' from the plist (as configured by the iOS standalone settings pane). It uses the supported orientations it finds to initialize the orientations allowed by autorotation (i.e. **iphoneSetAllowedOrientations()**), and the initial orientation it finds to ensure the interface starts the correct way round.

To ensure that your application works in only specific orientations from the outset, you need only configure the options in the standalone builder. In particular, *you need take no further action in script*.

Resolution handling

The new iPhone 4 has a display with double the resolution in both horizontal and vertical directions. By default, iOS handles this by mapping one logical 'point' to two physical 'pixels' with applications (rev included) interpreting everything in terms of logical points. This means that apps targetted for older devices will run identically on the newer iPhone 4 devices.

You can use **the screenRect**, **the working screenRect** and **the effective working screenRect** properties to find out the current full size of the screen, the area not including the status bar and the area not including the status bar and keyboard respectively.

As **the screenRect** and associated properties all deal in logical points, they do not reflect the actual device resolution at which the app is being displayed. To fetch the device screen's resolution in pixels use the **iphoneDeviceResolution()** function. This will return a string in the form *width, height* – with the values being given in pixels.

To use the full resolution of such high-resolution devices, use the command:

```
iphoneUseDeviceResolution usePixels, [ nativeControlsUsePixels ]
```

If *usePixels* is true, LiveCode will ensure that co-ordinates and sizes specified in LiveCode objects are treated as being in pixels, rather than logical points. In particular, when changed, a *resizeStack* message will be sent notifying in the size change of the current main-stack, and functions and properties (such as **the screenRect**) will reflect co-ordinates in pixels.

If *nativeControlsUsePixels* is true **and** *usePixels* is true, any co-ordinates and sizes passed to the iOS native controls (i.e. those managed through the *iphoneControl* collection of handlers) will also use pixels rather than points. If not specified, or *usePixels* is false, native controls will assume co-ordinates and sizes are in points.

Note: The notion of pixel and logical point remains valid on older devices, its just that it is always 1-1 thus using this command will have no effect there.

The scale of the devices screen (relative to a non-Retina display) can be queried using **iphoneDeviceScale()**. This function will return 2 if the display is a Retina display, or 1 otherwise. The function **mobilePixelDensity()** is a synonym of **iphoneDeviceScale()**.

Location and heading tracking

The iOS engine can use CoreLocation to track both the position and heading of the device, assuming the necessary GPS and / or digital compass hardware is present.

Location tracking (GPS)

Note that as of 5.5-dp-1, this syntax has been deprecated in favour of the new generic sensor syntax. See the section “Sensor tracking”.

Determining support

To determine if a device has the necessary hardware support for tracking location using GPS use the **iphoneCanTrackLocation()** function.

This returns *true* if location can be tracked, or *false* otherwise.

Activating and deactivating tracking

Assuming the hardware is present, tracking of the current location of the device can be activated and deactivated by using:

iphoneStartTrackingLocation

iphoneStopTrackingLocation

Starting to track location may request permission from the user to access the GPS hardware depending on system settings.

Detection location changes

You can detect changes in location by handling the *locationChanged* message. This message is sent to the current card of the default stack.

If location tracking cannot be started (typically due to the user 'not allowing' access to CoreLocation) then a *trackingError* message is sent instead. (*Note – this has been updated from locationError in 5.5-dp-1*).

Querying the location

While location tracking is active, the current location of the device can be fetched by using the `iphoneCurrentLocation()` function.

If location tracking has not been enabled this function returns empty.

If location tracking is active then it returns an array with the following keys:

- *horizontal accuracy* – the maximum error in meters of the position indicated by *longitude* and *latitude*
- *latitude* – the latitude of the current location, measured in degrees relative to the equator. Positive values indicate positions in the Northern Hemisphere, negative values in the Southern.
- *longitude* – the longitude of the current location, measured in degrees relative to the zero meridian. Positive values extend east of the meridian, negative values extend west.
- *vertical accuracy* – the maximum error in meters of the *altitude* value.
- *altitude* – the distance in meters of the height of the device relative to sea-level. Positive values extend upward of sea-level, negative values downward.
- *timestamp* – the time at which the measurement was taken, in seconds since 1970.

If the latitude and longitude could not be measured, those keys together with the *horizontal accuracy* key will not be present. If the altitude could not be measured, that key together with the *vertical accuracy* will not be present.

Heading tracking (digital compass)

Note that as of 5.5-dp-1, this syntax has been deprecated in favour of the new generic sensor syntax. See the section “Sensor tracking”.

Determining support

To determine if a device has the necessary hardware support for tracking heading using a digital compass use the `iphoneCanTrackHeading()` function.

This returns *true* if location can be tracked, or *false* otherwise.

Note: The digital compass is only supported in iOS 4.0 and later.

Activating and deactivating tracking

Assuming the hardware is present, tracking of the current heading of the device can be activated and deactivated by using:

iphoneStartTrackingHeading

iphoneStopTrackingHeading

Starting to track heading may request the user to calibrate the magnetometer, see the calibration section for more details.

Detection heading changes

You can detect changes in heading by handling the *headingChanged* message. This message is sent to the current card of the default stack.

If heading tracking cannot be started (typically due to a lack of calibration) then a *trackingError* message is sent instead. (*Note – this has been updated from headingError in 5.5-dp-1*).

Querying the heading

While heading tracking is active, the current heading of the device can be fetched by using the `iphoneCurrentHeading()` function.

If heading tracking has not been enabled this function returns empty.

If heading tracking is active then it returns an array with the following keys:

- *accuracy* - The maximum deviation (measured in degrees) between the reported heading and true geomagnetic heading. The lower the value, the more accurate the reading.
- *magnetic heading* - The heading (measured in degrees) relative to magnetic north.
- *true heading* - The heading (measured in degrees) relative to true north. If the true heading could not be calculated (usually due to heading tracking not being enabled, or lack of calibration), this key will not be present.
- *heading* - The true heading if available, otherwise the magnetic heading.
- *x, y, z* - The geomagnetic data (measured in microteslas) for each of the x, y and z axes.
- *timestamp* - The time at which the measurement was taken, in seconds since 1970.

Heading calibration

It is sometimes necessary for the system to prompt the user to calibrate the magnetometer in order to provide reliable heading information.

By default, this facility is turned off – i.e. the system will not prompt for calibration.

To control whether the system can prompt the user for calibration use:

iphoneSetHeadingCalibrationTimeout *timeoutInSeconds*

If *timeoutInSeconds* is zero no calibration prompt will be displayed. If non-zero, it determines the maximum length of time a prompt for calibration will be displayed to the user. If the user does not choose to calibrate the device within that time, the prompt will be dismissed.

The current setting of the timeout can be queried using **iphoneHeadingCalibrationTimeout()**.

Sensor tracking

As of LiveCode 5.5-dp-1, sensor support has been unified into a new set of easy to use syntax. Four different sensor can be tracked:

- **location** – tracks the location of the device using either GPS or network triangulation
- **heading** – tracks the heading of the device using the digital compass
- **acceleration** – tracks the devices motion using the accelerometer

- **rotation rate** – tracks the rotation of the device

The names detailed in bold will be used to reference the sensors.

Sensor availability

mobileSensorAvailable(*sensor*)

The function **mobileSensorAvailable** will return true or false depending upon the availability of the given sensor. Here, *sensor* is the name of the sensor you wish to check as detailed in the previous section.

Start tracking sensor

mobileStartTrackingSensor *sensor*, [*loosely*]

If a sensor is available, you can start tracking it using the command **mobileStartTrackingSensor**. Once tracking a sensor, periodic messages will be sent to the card specifying any changes. This also enables you to query the reading of a sensor at any point.

The parameter *loosely* is a boolean determining how detailed the readings from the sensors should be.

- true - readings will be determined without using accurate (but power consuming) sources such as GPS
- false - readings will be determined using accurate (but power consuming) sources such as GPS

Stop tracking sensor

mobileStopTrackingSensor *sensor*

You can stop tracking a sensor at any point using the command **mobileStartTrackingSensor**. This will mean that the periodic update messages will no longer be sent and that you can no longer query the sensor for readings.

Sensor update messages

Once **mobileStartTrackingSensor** has been called, update messages will be sent to the current card, detailing the sensors latest reading.

locationChanged *latitude*, *longitude*, *altitude*

- *latitude* – the latitude of the device
- *longitude* – the longitude of the device
- *altitude* – the altitude of the device

headingChanged *heading*

- *heading* - the heading of the device, in degrees relative to true north if available, otherwise relative to magnetic north

accelerationChanged *x*, *y*, *z*

- *x* - the rate of acceleration around the x axis, in radians/second
- *y* - the rate of acceleration around the x axis, in radians/second
- *z* - the rate of acceleration around the x axis, in radians/second

rotationRateChanged *x, y, z*

- *x* - the rate of rotation around the x axis, in radians/second
- *y* - the rate of rotation around the y axis, in radians/second
- *z* - the rate of rotation around the z axis, in radians/second

If at any point there is an error tracking one of the sensors, the **trackingError** message will be sent.

trackingError *sensor, errorMessage*

Getting a sensor reading

In addition to the update messages that are sent, you can get the reading of any sensor you are tracking using the function **mobileGetSensorReading**

mobileSensorReading(*sensor, [detailed]*)

The boolean parameter *detailed* determines the amount of detail present in the data returned. If this is false, the data returned is a comma separated list. If true, an array is returned. By default, *detailed* is false.

The data returned depends upon the sensor.

Location - a comma separated list of the latitude, longitude and altitude of the device. If *detailed* is true an array containing the keys latitude, longitude, altitude, time stamp, horizontal accuracy and vertical accuracy is returned.

If the latitude and longitude could not be measured, those values together with the *horizontal accuracy* key will not be present. If the altitude could not be measured, that value together with the *vertical accuracy* will not be present.

Heading - the heading of the device in degrees. If *detailed* is true an array containing the keys heading, magnetic heading, true heading, time stamp, x, y, z and accuracy is returned.

Acceleration - a comma separated list of the acceleration in the x, y and z axes. If *detailed* is true an array containing the keys x, y, z and timestamp is returned.

Rotation Rate - a comma separated list of the rate of rotation around the x, y and z axes. If *detailed* is true an array containing the keys x, y, z and timestamp is returned.

Email composition

Basic support

A version of **revMail** has been implemented that hooks into the iPhone's MessageUI framework. Using this, you can compose a message and request that the user send it using their currently configured mail preferences.

The syntax of **revMail** is:

memory is used by asking the OS to only load it from disk when needed. Therefore, this should be the preferred method when attaching large amounts of data.

For example, sending a single attachment might be done like this:

```
put "Hello World!" into tAttachment["data"]
put "text/plain" into tAttachment["type"]
put "Greetings.txt" into tAttachment["name"]
iphoneComposeMail tSubject, tTo, tCCs, tBCCs, tBody, tAttachment
```

If multiple attachments are needed, simply build an array of attachment arrays:

```
put "Hello World!" into tAttachments[1]["data"]
put "text/plain" into tAttachments[1]["type"]
put "Greetings.txt" into tAttachments[1]["name"]
put "Goodbye World!" into tAttachments[2]["data"]
put "text/plain" into tAttachments[2]["type"]
put "Farewell.txt" into tAttachments[2]["name"]
iphoneComposeMail tSubject, tTo, tCCs, tBCCs, tBody, tAttachments
```

Note: There are hard limits imposed by the OS of the size of attachments that can be made. This isn't precisely specified anywhere but appears to be around 16Mb based on forum threads.

Upon completion of a compose request, **the result** will be set to one of the following:

- *sent* – the email was sent successfully
- *failed* – the email failed to send
- *saved* – the email was not sent, but the user elected to save it for later
- *cancel* – the email was not sent, and the user elected not to save it for later
- *not configured* – the device is not configured to send email

Some devices will not be configured with email sending capability. To determine if the current device is, use the **iphoneCanSendMail()** function. This returns **true** if the mail client is configured.

Text messaging support

Use the command **mobileComposeTextMessage** to launch the default text messaging app.

```
mobileComposeTextMessage recipients, [body]
```

The *recipients* is a comma separated list of phone numbers you want the message to be sent to. The optional *body* is the content of the message you wish to send.

Note that once you've called the **mobileComposeTextMessage** command you have no more control over what the user does with the message – they are free to modify it and the addresses as they see fit.

Upon completion of a compose request, the result is set to one of the following:

- sent - the text was sent successfully

- `cancel` - the text was not sent, and the user elected not to save it for later
- `failed` - the text could not be sent
- `false` - the device does not have text messaging functionality

You can determine if the device has the text messaging client configured using the function `mobileCanComposeTextMessage()`. This returns true if the client is configured.

File and folder handling

In general handling files and folders in the iPhone engine is the same as that on the desktop. All the usual syntax associated with such operations will work. Including:

- **open file/read/write/seek/close file**
- **delete file**
- **create folder/delete folder**
- setting and getting **the folder**
- listing files and folders using **the [detailed] files** and **the [detailed] folders**
- storing and fetching *binfile:* and *file:* urls

However, it is important to be aware that the iPhoneOS imposes strict controls over what you can and cannot access. Each application in iPhoneOS is stored in its own 'sandbox' folder (referred to as the *home* folder). An application is free to read and write files within this folder and its descendants, but is not allowed to access anything outside of this.

When an application is installed on a phone (or in the simulator) a number of initial folders are created for use by the application. You can locate the paths to these folders using the `specialFolderPath()` function with the following selectors:

- *home* – the (unique) folder containing the application bundle and its associated data and folders
- *documents* – the folder in which the application should store any document data (this folder is backed up by iTunes on sync)
- *cache* – the folder in which the application should store any transient data that needs to be preserved between launches (this folder is **not** backed up by iTunes on sync)
- *library* – the folder in which the application can store data of various types. In particular, data private to the application should be stored in a folder named with the app's bundle identifier inside *library*. (this folder is backed up by iTunes on sync).
- *temporary* – the folder in which the application should store any temporary data that is not needed between launches (this folder is **not** backed up by iTunes on sync)
- *engine* – the folder containing the built standalone engine (i.e. the bundle). This is useful for constructing paths to resources that have been copied into the bundle at build time.

In general you should only create files within the documents, cache, and temporary folders. Indeed, be careful not to change or add any files within the application bundle. The application bundle is digitally signed when it is built, and any changes to it after this point will invalidate the signature and prevent it from launching.

*Note: Unlike (most) Mac OS X installs, the iPhoneOS filesystem is **case-sensitive** so take care to ensure that you consistently use the same casing for filenames when constructing them. Also note that the Simulator has the same case-sensitivity as the host system and **not** the device.*

System alert support

Support has been added for **the beepSound** and **beep** commands. These hook into iPhoneOS's standard *PlayPlayerSound* support.

To specify a sound to be played as the system sound, use **the beepSound** global property. This should be set to the filename of the sound to use when **beep** is executed. If you want no sound to play when using **beep**, simply set **the beepSound** to **empty**.

To perform a system alert, use the **beep** command. If no sound has been specified via **the beepSound** global property, the engine will request a vibration alert.

*Note: The iPhone has no default system alert sound so if a sound is required one must be specified by using **the beepSound**. The action of **beep** is controlled by the system and depends on the user's preference settings. In particular, a beep will only cause a vibration if the user has enabled that feature. Similarly, a beep will only cause a sound if the phone is not in silent mode.*

Vibration support

mobileVibrate [*numberOfTimes*]

To make the device vibrate, use the command **mobileVibrate**. The parameter *numberOfTimes* determines the number of times you wish the device to vibrate. This defaults to 1.

Basic sound playback support

Basic support for playing sounds has been added using a variant of the **play** command. A single sound can be played at once by using:

play *soundFile* [**looping**]

Executing such a command will first stop any currently playing sound, and then attempt to load the given sound file. If **looping** is specified the sound will repeat forever, or until another sound is played.

If the sound playback could not be started, the command will return "could not play sound" in **the result**.

To stop a sound that is currently playing, simply use:

play empty

The volume at which a sound is played can be controlled via **the playLoudness** global property.

The overall volume of sound playback depends on the current volume setting the user has on their device.

This feature uses the built-in sound playback facilities on the iPhone (AVPlayer, to be specific) and as such has support for a variety of formats including AIFF and MP3's.

You can monitor the current sound being played by using **the sound** global property. This will either return the filename of the sound currently being played, or "done" if there is no sound

currently playing.

Multi-channel sound support

In addition to basic sound playback support, there is also support for playing sounds on different channels. This feature uses the iOS *AVAudioPlayer* object, which allows many concurrent sounds to be played simultaneously.

*Example: You can find a simple stack using the multi-channel soundl features in the IDE resources folder (open using the **Help > Example Stacks and Resources** menu item). The stack can be found at: **Mobile Examples/Sound Example.livecode***

Playing Sounds

To play a sound on a given channel use the following command:

iphonePlaySoundOnChannel *sound, channel, type*

Where *sound* is the sound file you wish to play, *channel* is the name of the channel to play it on and *type* is one of:

- *now* – play the sound immediately, replacing any current sound (and queued sound) on the channel.
- *next* – queue the sound to play immediately after the current sound, replacing any previously queued sound. If no sound is playing the sound is prepared to play now, but the channel is immediately paused – this case allows a sound to be prepared in advance of it being needed.
- *looping* – play the sound immediately, replacing any current sound (and queued sound) on the channel, and make it loop indefinitely.

If a sound channel with the given name doesn't exist, a new one is created. When queuing a sound using *next*, the engine will 'pre-prepare' the sound long before the current sound is played, this ensures minimal latency between the current sound ending and the next one beginning.

If an empty string is passed as the sound parameter, the current and scheduled sound on the given channel will be stopped and cleared.

When a sound has finished playing naturally (not stopped/replaced) on a given channel, a **soundFinishedOnChannel** message is sent to the object which played the sound:

soundFinishedOnChannel *channel, sound*

The message is sent after the switch has occurred between a current and next sound on the given channel. This makes it is an ideal opportunity to schedule the next sound on the channel, thus allowing continuous and seamless playback of sounds.

To stop the currently playing sound, and to clear any scheduled sound, on a given channel use:

iphoneStopPlayingOnChannel *channel*

To pause the currently playing sound on a given channel use:

iphonePausePlayingOnChannel *channel*

To resume the current sound's playback on a given channel use:

iphoneResumePlayingOnChannel *channel*

Channel Properties

To control the volume of a given sound channel use the following:

iphoneSetSoundChannelVolume *channel, volume*

iphoneSoundChannelVolume(*channel*)

Here *channel* is the channel to affect, and *volume* is an integer between 0 and 100 where 0 is no volume, 100 is full volume.

Changing the volume affects the currently playing sound and any sounds played subsequently on that channel.

Note that you can set the volume of a non-existent channel and this will result in it being created. This allows you to set the volume *before* any sounds are played. If you attempt to get the volume of a non-existent channel, however, empty will be returned.

To find out what sounds (if any) are currently playing and are scheduled for playing next on a given channel use:

iphoneSoundOnChannel(*channel*)

iphoneNextSoundOnChannel(*channel*)

These will return empty if no sound is currently (scheduled for) playing (or the channel doesn't exist).

To query a channel's current status use **iphoneSoundChannelStatus**(*channel*). This returns one of the following:

- *stopped* – there is no sound currently playing, nor any sound scheduled to be playing
- *paused* – there are sounds scheduled to be played, but the channel is currently paused
- *playing* – a sound is currently playing on the channel

Managing Channels

To get a list of the sound channels that currently exist use:

iphoneSoundChannels()

This returns a return-delimited list of the channel names.

Sound channels persist after any sounds have finished playing on them, retaining the last set volume setting. To remove a channel from memory completely use:

iphoneDeleteSoundChannel *channel*

Sound channels only consume system resources when they are playing sounds, thus you don't need to be concerned about having many around at once (assuming most are inactive!).

Audio session support

The category of the application's audio session can be set using the command:

iphoneSetAudioCategory *category*

The audio category determines how your application's audio interacts with other application's and how it reacts to screen locking and the silent switch.

The category can be one of the following:

- *ambient* – Audio from other apps will mix in. Audio will be silenced by screen locking and the silent switch.
- *solo ambient* – Default category. Audio from other apps is silenced. Audio will be silenced by screen locking and the silent switch.
- *playback* - Audio from other apps is silenced. Audio will be *not* be silenced by screen locking and the silent switch.
- *record* - Audio is silenced when recording. Recording continues when the screen is locked.
- *play and record* - Audio from other apps is silenced. Audio will be *not* be silenced by screen locking and the silent switch. Audio is *not* silenced when recording.
- *audio processing* – To be used when processing audio. Audio playback and recording is disabled.

Video playback support

Basic support for playing videos has been added using a variant of the **play** command. A video file can be played by using:

play video (*video-file* | *video-url*)

The video will be played fullscreen, and the command will not return until it is complete, or the user dismisses it.

If a path is specified it will be interpreted as a local file. If a url is specified, then it must be either an 'http', or 'https' url. In this case, the content will be streamed.

The playback uses iOS's built-in video playback support (MPMoviePlayer) and as such can use any video files supported by that, including mp4's.

On iPhoneOS 3.1.3, the video will always play with landscape orientation (there is no 'legal' way to change this). On iOS 3.2 and later, however, the orientation of the video will be tied to the current interface orientation.

Appearance of the controller is tied to **the showController of the templatePlayer**. Changing this property to true or false, will cause the controller to either be shown, or hidden.

When a movie is played without controller, any touch on the screen will result in a *movieTouched* message being sent to the object's whose script started the video. The principal purpose of this message is allow the **play stop** command to be used to stop the movie. e.g.

```

on movieTouched
    play stop
end movieTouched

```

Note: The *movieTouched* message is *not* sent if the video is played with **showController** set to true.

Playing a video can be made to loop by setting **the looping of the templatePlayer** to true before executing the play video command. Note that looping video is only supported on iOS 3.2 and higher.

A section of a video can be played by setting **the playSelection of the templatePlayer** to true

before executing the play video command. This will then use **the startTime** and **the endTime** properties of **the templatePlayer** to determine what section to play. The values of these properties will be interpreted as the number of milliseconds from the beginning of the video.

URL launching support

Support for launching URLs has been added. The **launch url** command can now be used to request the opening of a given url:

launch url *urlToOpen*

When such a command is executed, the engine first checks to see if an application is available to handle the URL. If no such application exists, the command returns "no association" in **the result**. If an application is available, the engine requests that it launches with the given url.

Using this syntax it is possible to do things such as:

- open Safari with a given *http:* url
- open the dialer with a given phone number using a *tel:* url

Important: *Successfully launching a url will cause another application to open and the requesting application to be quit. The application will receive a **shutdown** message before this happens, however.*

Font querying support

The list of available fonts can now be queried by using **the fontNames** function. This returns a return-delimited list of all the available font families.

The list of available styles can be queried by using the **fontStyles** function:

fontStyles(*fontFamily*, 0)

This will return the list of all font names in the given family. It is these names which should be used as the value of **the textFont** property.

Note: *Strictly speaking the list returned by **fontStyles** isn't the font styles, but the font names and the list returned by **fontNames** isn't the font names but the font families.*

Visual effect support

The iOS engine now has support for a range of visual effects – including some specific to iOS. The following effects are available:

- scroll (up | left | down | right)
- reveal (up | left | down | right)
- push (up | left | down | right)
- dissolve
- curl (up | down)
- flip (left | right)

Speed can be controlled via the usual adjectives *very slow*, *slow*, *normal*, *fast* or *very fast*.

For the *flip* visual effect, the background behind the flip will be taken from the background color of the current stack – i.e. the card is cut out and flipped over the stack.

Status bar configuration support

You can now configure the status bar that appears at the top of the iOS screen.

To control the visibility of the status bar use the following commands:

iphoneShowStatusBar

iphoneHideStatusBar

To control the style of the status bar use the following command:

iphoneSetStatusBarStyle *style*

Where *style* is one of:

- *default* – the default mode for the device
- *translucent* – a semi-transparent status bar (in this case the stack will appear underneath it)
- *opaque* – a black status bar (in this case the stack will appear below it).

On iPad devices, anything other than *default* has no effect.

Locale and system language query support

You can query the list of preferred languages using the **iphonePreferredLanguages()** function. This returns a return-delimited list of standard language tags in order of user preference (for example "en", "fr", "de", etc.)

You can query the currently configured locale using the **iphoneCurrentLocale()** function. This returns a standard locale tag (for example "en_GB", "en_US", "fr_FR", etc.)

Runtime environment querying

You can fetch numerous pieces of information about the environment in which the current application is running with the following syntax.

To determine what processor an application is running on use **the processor**. In the simulator this will return *i386* and on a real device this will return *ARM*.

To determine the type of device an application is running on use **the machine**. This will return one of:

- *iPod Touch* – the device is one of the iPod Touch models
- *iPhone* – the device is one of the iPhone models
- *iPhone Simulator* – the device is a simulated iPhone
- *iPad* – the device is the iPad
- *iPad Simulator* – the device is a simulator iPad

To determine the version of iPhoneOS the application is running on, use **the systemVersion**. For example, if the device has iPhoneOS 3.2 installed, this property will return 3.2; if the device has

iPhoneOS 3.1.3 installed, this property will return 3.1.3.

You can fetch the current device's unique system identifier with the `iphoneSystemIdentifier()` function. This returns a string in the standard UUID/GUID format.

The bundle identifier for the current application can be queried with `iphoneApplicationIdentifier()` function. This returns the identifier specified in the iOS standalone settings, and is useful (among other things) for creating a private folder in `specialFolderPath("library")` following Apple guidelines.

Modal Pick-Wheel support

You can present the user with a list of choices to pick from using standard iOS interface elements using:

```
iphonePick optionList, initialIndex, [ optionList, initialIndex, ... ], [ style ], [button], [view]
```

Where *optionList* is a return-delimited list to choose from, and *initialIndex* is the (1-based) index of the item to be initially highlighted. The item the user chooses is returned in **the result**.

A pick-wheel with multiple columns can be created by specifying more than one *optionList initialIndex* pair. For multi-column pick-wheels, **the result** will be a comma separated list of the chosen items, one item for each column.

On the iPhone, a standard Action Sheet pops up containing the standard pick-wheel user interface element; and on the iPad, a standard pop-over is presented with a list to choose from.

There are two modes of operation of the pick command, depending on the value of *initialIndex*.

If *initialIndex* is non-zero, the operation will act as a means to change an existing selection. The item specified by the initial index will be hilited (checked or hilited on iPad), and will be returned by default in the case the user does not choose a new item.

If *initialIndex* is zero, the operation will act as a means to select from a list of options. The user will be able to cancel the operation by either clicking 'Cancel' (iPhone) or touching outside of the pop-over (iPad). If the operation is cancelled, 0 will be returned; otherwise the selected item will be returned.

The optional *style* parameter determines the type of display used on the iPad. If equal to "checkmark" a check-mark (tick) will be put against the currently selected item. If not present, the currently selected item will be hilited with the (standard) blue background.

The optional button parameter specifies if "Cancel" and/or "Done" buttons should be forced to be displayed with the picker dialog. The default behavior is device dependent, exhibiting the most native operation.

- cancel - display the Cancel button on the Picker
- done - display the Done button on the Picker
- cancelDone - display the Cancel and Done buttons on the Picker

The optional view parameter specifies the type of view to be displayed when showing a single column of data on an iPad. By default a standard pop-over is displayed with a single column of data. If "picker" is specified, then the single column of data is replaced with a single picker wheel.

Date picker support

You can present the user with a standard iOS date picker using:

iphonePickDate [*mode*], [*initial*], [*min*], [*max*], [*step*], [*button*]

The display style of the date picker will be determined by the users current calendar style as configured in Settings.

The mode parameter determines the mode of the date picker and can be one of the following:

- *date*
- *time*
- *dateTime*

The mode defaults to date.

The initial parameter determines the initial date to be displayed by the date picker. If this is empty, the current date will be used. This should be a time in seconds since the Unix Epoch.

The min parameter is the start range of the date picker. If this value is empty, there is no lower boundary. The value is ignored if min is greater than max. This should be a time in seconds since the Unix Epoch.

The max parameter is the end range of the date picker. If this value is empty, there is no upper boundary. The value is ignored if max is less than min. This should be a time in seconds since the Unix Epoch.

The step parameter specifies the minute interval size. This parameter is ignored if mode is set to "date". The default is 1.

The optional button parameter specifies if "Cancel" and/or "Done" buttons should be forced to be displayed with the picker dialog. The default behavior is device dependent, exhibiting the most native operation.

- *cancel* - display the Cancel button on the Picker
- *done* - display the Done button on the Picker
- *cancelDone* - display the Cancel and Done buttons on the Picker

When the date picker is dismissed by the user, the selected date will be stored in the result.

Media picker support

You can present the user with the standard iOS media picker using:

iphonePickMedia [*multiple*], [*type...*]

Set *multiple* to true if you want to allow the user to pick more than one item.

You can specify the *type* of media item the user is to select from by passing one or more of the following:

- *music* - Specifies that the user should be allowed to select music items.
- *podCast* - Specifies that the user should be allowed to select pod casts.
- *audioBook* - Specifies that the user should be allowed to select audio books.

- *anyAudio* - Specifies that the user should be allowed to select any audio item.

If no types are passed, all media items will be displayed.

A return separated list of all the media items the user has picked will be present in the result. A media item can be played back using the **play** command.

Contact Access

Support to access and modify the iOS contact list has been added as of LiveCode 5.5.1-rc-1. Interaction with the contact list can be controlled either via native user interfaces or directly from the LiveCode syntax.

UI Contact Access Features

Four native user interfaces are available that allow contacts to be created, picked, shown or updated.

Creating a Contact

You launch the native iOS contact creation dialog by calling the command **mobileCreateContact**. This allows the user to create a contact with the fields that the user considers to be required for the new contact.

The result of this command returns either "empty" if no contact was created or the ID of a successfully created contact.

Picking a Contact

The user can select a contact from the contact list by using the **mobilePickContact** command. The user is presented with a contact list dialog that shows all the contacts in the contact list.

The result of this command returns either "empty" if no contact was selected or the ID of the selected contact.

Showing a Contact

It is possible to present the contact details of a contact to the user using the native iOS contact viewer. You launch the contact viewer by calling the command:

mobileShowContact *contactID*

The dialog is only launched if the provided *contactID* exists in the contact list.

The result of this command returns either "empty" if no contact with the provided *contactID* exists, or the ID of the contact that was viewed.

Updating a Contact

A contact can be pre-populated with information before launching an iOS contact creation dialog by using the command:

mobileUpdateContact *propertyName, propertyString* , [*propertyName, propertyString*]...

This feature allows interaction with the contact creation process to be streamlined for the user. If an

application is already aware of some of the contact details that the user has to complete, then that data can be entered into the new contact automatically.

The information to pre-populate contact information is provided in form of a comma delimited list of token,value pair strings.

The supported tokens are listed under heading "Syntax Contact Access Features".

The result of this command returns either "empty" if no contact was created or the ID of a successfully created contact.

Syntax Contact Access Features

The LiveCode syntax supports direct contacts manipulation to create, find, remove a contact and to read contact data. Contact data manipulation is provided by the following tokens:

Titles

- title, string - The title that is to appear at the top of the user interface.

Person Information

- firstname - The first name.
- middlename - The middle name.
- lastname - The last name.
- alternatename - The alternative name.
- nickname - The nick name.
- firstnamephonetic - The phonetic transcription of the first name.
- middlenamephonetic - The phonetic transcription of the middle name.
- lastnamephonetic - The phonetic transcription of the last name.
- prefix - The name prefix.
- suffix - The name suffix.
- organization - The name of the organization.
- jobtitle - The job title.
- department - The name of the department.
- message - A person message.
- note - A person note.

E-Mail Addresses

- emailhome - The home e-mail address.
- emailwork - The work e-mail address.
- emailother - An alternative e-mail address.

Telephone Numbers

- phonemobile - The mobile telephone number.
- phoneiphone - The iPhone telephone number.
- phonemain - The main telephone number.
- phonehome – The home telephone number.
- phonework – The work telephone number.
- phonehomefax - The home FAX number.
- phoneworkfax - The work FAX number.
- phoneotherfax – An alternative FAX number (iOS 5.0 and later).
- phonepager - The pager number.
- phoneother - An alternative telephone number.

Home Address

- addressstreethome - The home address street.
- addresscityhome - The home address city.
- addressstatehome - The home address state.
- addressziphome - The home address ZIP code.
- addresscountryhome - The home address country.
- addresscountrycodehome - The home address country code.

Work Address

- addressstreetwork - The work address street.
- addresscitywork - The work address city.
- addressstatework - The work address state.
- addresszipwork - The work address ZIP code.
- addresscountrywork - The work address country.
- addresscountrycodework - The work address country code.

Other Address

- addressstreetother - An alternative address street.
- addresscityother - An alternative address City.
- addressstateother - An alternative address state.
- addresszipother - An alternative address ZIP code.
- addresscountryother - An alternative address country.
- addresscountrycodeother - An alternative address country code.

Adding a Contact

You can add a contact by calling the command **mobileAddContact**. This allows you to populate the entries of the new contact record with token,value pair strings of the following form:

mobileAddContact *propertyName, propertyString, [propertyName, propertyString]...*

The supported tokens are listed under heading "Syntax Contact Access Features".

The result of this command returns either "empty" if no contact was created or the ID of a successfully created contact.

Finding a Contact

The contact list database can be queried, based on the contact name, using the command:

mobileFindContact *contactName*

It is possible to provide parts of the contact's name that is to be queried as the argument *contactName*. The first letter of the given name or surname would be sufficient to provide a search for a given contact.

The result of this command returns either "empty" if no contact could be found or a comma delimited list of IDs of the contacts that match the search.

Removing a Contact

A contact can be removed from the contact list by using the command:

mobileRemoveContact *contactID*

The result of this command returns either "empty" if no contact with the provided ID could be found or the ID of the contact that was deleted.

Getting Contact Data

Information stored against a particular contact can be retrieved by calling the function:

mobileGetContactData(*contactID*)

This function extracts all of the contact fields that are supported in LiveCode and returns them in form of an array with the array keys representing the tokens and the corresponding array values representing the contact specific information.

This function returns an array of key/values that represent populated information if contact data was found. Contact records that are supported by LiveCode and were not populated are not returned in the array.

Idle Timer configuration

By default, iOS will dim the screen and eventually lock the device after periods of no user-interaction.

To control this behavior, use the following commands:

iphoneLockIdleTimer

iphoneUnlockIdleTimer

Locking the idle timer increments an internal lock count, while unlocking the idle timer decrements the lock count. When the lock count goes from 0 to 1, the `idleTimer` is turned off; when the lock count goes from 1 to 0, the `idleTimer` is turned on.

To determine whether the `idleTimer` is currently locked (i.e. turned off) use **`iphoneIdleTimerLocked()`**.

This feature wraps the `UIApplication` class's `setIdleTimerDisabled` method.

Querying camera capabilities

To find out the capabilities of the current device's camera(s), use the following function:

`iphoneCameraFeatures([camera])`

The *camera* parameter is a string containing either "rear" or "front". In this case, the capabilities of that camera are returned. These take the form of a comma-delimited list of one or more of the following:

- *photo* – the camera is capable of taking photos
- *video* – the camera is capable of recording videos
- *flash* – the camera has a flash that can be turned on or off

If the returned string is empty it means the device does not have that type of camera.

If no camera parameter is specified (or is empty), then a comma-delimited list of one or more of the following is returned:

- *front photo* – the front camera can take photos
- *front video* – the front camera can record video
- *front flash* – the front camera has a flash
- *rear photo* – the rear camera can take photos
- *rear video* – the rear camera can record video
- *rear flash* – the rear camera has a flash

If the returned string is empty it means the device has no cameras.

Clearing pending interactions

As interaction events (touch and mouse messages) are queued, it is possible for such messages to accumulate when they aren't needed. In particular, when executing 'waits', 'moves' or during card transitions.

To handle this case, the **`iphoneClearTouches`** command has been added. At the point of calling, this will collect all pending touch interactions and remove them from the event queue.

Note that this also cancels any existing mouse or touch sequences, meaning that you (nor the engine) will not receive a `mouseUp`, `mouseRelease`, `touchEnd` or `touchCancel` message for any current interactions.

A good example of when this command might be useful is when playing an instructional sound:

```

on tellUserInstructions
    play specialFolderPath("engine") & slash & "Instruction_1.mp3"
    wait until the sound is "done"
    iphoneClearTouches
end tellUserInstructions

```

Here, if the *iphoneClearTouches* call was not made, any touch events the user created while the sound was playing would be queued and then be delivered immediately afterwards potentially causing unwanted effects.

Managing redraws

The function **iphoneSetRedrawInterval** can be used to manage the way LiveCode handles redraws. By default, LiveCode updates the screen immediately after any command that requires it. This means that several small screen updates may occur in quick succession when animation is combined with other dynamic screen elements. On mobile devices this can affect smoothness of animation where it would be better if multiple frequent redraws were replaced with a single periodic redraw. Setting the **iphoneSetRedrawInterval** enables this behaviour, where the screen is updated at a fixed interval tied to iOS's redraw rate.

```
iphoneSetRedrawInterval frameInterval
```

frameInterval - A number specifying how often LiveCode should update the screen in line with the screen's refresh rate.

- 0** - Turn off synchronized redraws and revert to default LiveCode redrawing behavior.
- 1** - Redraw every time iOS redraws.
- 2** - Redraw on every other iOS redraw.
- x** - Redraw every x iOS redraws.

Activity indicator

iOS provides a native animated activity indicator that sits above all other components and is used to indicate that an app is busy processing.

Use the **iphoneActivityIndicatorStart** command to display a native iOS activity indicator on the top of the LiveCode stack that is running.

```
iphoneActivityIndicatorStart [type], [xposition, yposition]
```

Here, *type* can be one of:

- *gray* – default, displays a small gray spoked animation
- *white* - displays a small white spoked animation
- *whiteLarge* - displays a large white spoked animation

The *xposition* and *yposition* specify the location in pixels of the activity indicator. If a location is not specified, then the animation is positioned in the middle of the screen.

You can turn the activity indicator off by calling **iphoneActivityIndicatorStop**.

```
iphoneActivityIndicatorStop
```

Busy indicator

Use the command **mobileBusyIndicatorStart** to display an activity dialog that will sit above all other controls and block user interaction.

mobileBusyIndicatorStart *style, [label]*

The *style* parameter is used to determine the display style of the dialog. At the moment, only “square” is supported. This creates a square dialog box containing an animated progress indicator and an optional label.

The optional *label* parameter is used to pass any text which you wish to be displayed in the dialog.

To dismiss the dialog, use the **mobileBusyIndicatorStop** command.

mobileBusyIndicatorStop

Application icon badge support

The badge is the number that appears on the top right of you applications icon and is used to signify the number of pending activities.

To set the badge value, use the command **iphoneSetNotificationBadgeValue** passing an the integer value you want to appear in the badge.

To get the current badge value, use the function **iphoneGetNotificationBadgeValue()**.

Local notifications

Local notifications allow applications to schedule notifications with the operating system. The notification can be received when the application is running in the foreground, the application is running in the background or the application is not running at all. The notification is delivered differently, depending on the mode in which the application is in at the time the notification is received.

mobileCreateLocalNotification *alertBody, alertButtonMessage, alertPayload, alertTime, playSound, [badgeValue]*

Use the command **mobileCreateLocalNotification** to schedule a notification with the OS.

- *alertBody*- the text that is to be displayed on the notification dialog, that is raised when the application is not running
- *alertButtonMessage* - the button text on the notification dialog, that is to appear on the button that launches the application, when the application is not running
- *alertPayload* - a text payload that can be sent with the notification request. This payload is presented to the user via the **localNotificationReceived** message
- *alertTime* - the time at which the alert is to be sent to the application
- *playSound* - boolean to indicate if a sound is to be played when the alert is received
- *badgeValue* - the number value to which the badge of the application logo is to be set. 0 hides the badge. Greater than 0 displays the value on the badge.

A return delimited list of all the currently pending notifications can be fetched using the function:

mobileGetRegisteredNotifications().

You can query a given notification using the function **mobileGetNotificationDetails**.

mobileGetNotificationDetails(notification)

This returns an array with the following entries:

- **body** - the text that is to be displayed on the notification dialog (iOS) or status bar entry (Android) when the application is not running
- **title** - the button text on the notification dialog (iOS) or the title of the status bar entry (Android)
- **payload** - the text presented to the app via the **localNotificationReceived** message
- **play sound** - boolean indicating if a sound is to be played when the notification is received\
- **badge value** - the number value which should be displayed on the app logo (iOS) or on the status bar icon (Android) when the notification is received. No number will be displayed if this is zero

To cancel a notification use command **mobileCancelLocalNotification**.

mobileCancelLocalNotification notification

Here, the *notification* parameter is a value returned by **mobileGetRegisteredNotifications()**.

To cancel all pending notifications, use the command **mobileCancelAllLocalNotifications**.

When you app receives a notification, the message **localNotificationReceived** will be sent.

localNotificationReceived message

Here, the *message* parameter is the payload specified when the notification was created.

Depending on the status of the application, iOS can launch a dialog box or open the login screen to inform the user that an application has information for them. The user can then decide whether or not to open the application. If the application is opened as a result of the notification, then LiveCode can handle the message. If an application is currently running when it receives a notification, then LiveCode can handle the message and process it as required.

If a badge number is received with the notification, then that badge value is displayed on the applications icon, but only if the application is not currently running. If the application is running, then a badge value update does not take place, as the application can handle the message without being launched.

Push notifications

Push notifications allow apps to avoid frequently polling for the availability of new remote data by providing a mechanism whereby notifications can be sent to the mobile device.

Yo must first registers with the service to obtain a device notification signature which is then sent to the remote server, which then uses the signature when communicating with the service to send notifications to the app.

The **pushNotificationReceived** message is sent once the application receives a push notification from a Push Notification Server.

pushNotificationReceived *message*

Depending on the status of the application, iOS can launch a dialog box or open the login screen to inform the user that an application has information for them. The user can then decide whether or not to open the application. If the application is opened as a result of the notification, then LiveCode can handle the message. If an application is currently running when it receives a notification, then LiveCode can handle the message and process it as required.

If a badge number is received with the notification, then that badge value is displayed on the applications icon, but only if the application is not currently running. If the application is running, then a badge value update does not take place, as the application can handle the message without being launched.

The **pushNotificationRegistered** message is sent once the application starts up and registers with the Push Notification Server.

pushNotificationRegistered *signature*

The *signature* parameter is the signature of the device. This is the unique device's signature that the Push Notification Server uses in order to send a notification to the device. This can be fetched at any point using the function **iphoneGetDeviceToken()**.

The application only tries to register with the Push Notification Server if the application was configured to handle Push Notifications in the Standalone application Builder.

The **pushNotificationRegistrationError** message is handled once the application starts up and tried, but failed to register with the Push Notification Server.

pushNotificationRegistrationError *errorMessage***Custom URL schemes**

Specifying a custom URL allows you app to be woken up when the given URL is invoked.

To specify a custom URL, add the desired URL to the “URL Name” field of the standalone application builder. For example, if you specify “myURL” as the URL name, then when the URL myURL:// is invoked, if installed, your app will be woken.

Extra parameters can be passed in the URL in the following format:

myURL://

myURL://some/path/here

myURL://?foo=1&bar=2

myURL://some/path/here?foo=1&bar=2

If you app is woken by a custom URL, the message **urlWakeUp** will be sent to the current card.

urlWakeUp *urlString*

A single parameter will be passed detailing the URL used to launch your app. This value can be retrieved at any point using the function **mobileGetLaunchURL()**. If the app was not launched from a URL then this will return empty.

Network reachability checking (experimental)

The network connection on iOS devices is generally more transient than normal network connections and can change between wireless and wide-area wireless (GPRS, 3G, EDGE etc.) transport as it moves, and indeed be lost entirely.

As the behavior of an application may vary depending on what kind of network connection is present it is useful to be able to monitor a given server for the type of connection the device currently has to it.

To start monitoring a specific server for reachability via the network use:

iphoneSetReachabilityTarget *hostNameOrAddress*

Where *hostNameOrAddress* is the host name or IP address of the server to start monitoring, or **empty** to stop monitoring.

The server currently being monitored can be determined by using the **iphoneReachabilityTarget()** function. This returns empty if no server is currently being monitored.

While a server is being monitored, any changes to network connectivity that affect access to it will cause a **reachabilityChanged** message to be delivered to this card of the defaultStack:

reachabilityChanged *hostNameOrAddress, reachabilityInfo*

Here *hostNameOrAddress* will be the server that is being monitored (the same string as passed to **iphoneSetReachabilityTarget**), and *reachabilityInfo* will be a comma-delimited list of zero or more of the following items:

- *transient* – the specified server can be reached via a transient connection
- *reachable* – the specified server can be reached via the current network configuration.
- *connection required* – the specified server can be reached via the current network configuration, but a connection needs to be established before it can.
- *connection on traffic* – the specified server can be reached via the current network configuration, but a connection needs to be established before it can. Any traffic directed to the server will initiate the connection.
- *intervention required* – the specified server can be reached via the current network configuration, but some form of user intervention will be required to establish this connection.
- *is local* – the specified server is associated with a network interface on the current system.
- *is direct* – network traffic to the given server will not go through a gateway, but is routed directly to one of the interfaces in the system.
- *is cell* – the specified server can be reached via an EDGE, GPRS or other 'cell' connection.

If no items are specified then it means the given server is not currently reachable.

The current reachability facilities are a direct wrapper around the SCNetworkReachability functions of the OS, thus the *reachabilityInfo* flags are a direct mapping of what that provides.

Our testing indicates the following are reasonable guidelines for checking for various states:

- To determine if there is no network connection at all (e.g. flight-mode or no cell nor wireless

signal) use:

reachabilityInfo **is empty**

- To determine if a network connection should succeed use:
"reachable" **is among the items of** reachabilityInfo
- To determine if a network connection should succeed but would use a cell network use:
"is cell" **is among the items of** reachabilityInfo
- To determine if a network connection should succeed and would use a wireless network use:
"reachable" **is among the items of** reachabilityInfo **and** \
"is cell" **is not among the items of** reachabilityInfo

***Feedback:** Please let us know if you find any other useful combinations of flags, or indeed find cases where the above guidelines do not work. This feature is currently is lower-level than we would like, and will improve/replace it when we have better set of common empirical use-cases and scenarios to work from.*

Important: This feature is currently experimental. This means that it may not be complete, or may fail in some circumstances that you would expect it to work. Please do not be afraid to try it out as we need feedback to develop it further.

In App Advertising

Ads are supplied by our ad partner [inneractive](#) and come in three different types: banner, full screen and text. Before you can begin placing ads, you must first register your app with inneractive.

To do this, sign up with inneractive at the following URL:

<http://runrev.com/store/account/inneractive/>. Once successfully signed up with inneractive you must generate a key for your app. Do this by clicking on the “Add App” tab of the inneractive dashboard and following the instructions provided.

Once you have a key for your app, you must register this with LiveCode using the **mobileAdRegister** command. You will now be ready to place ads, using the **mobileAdCreate** command.

Registering Your App Key

Before you can begin creating ads, you must first register your app's unique Interactive identifier. All ad activity, including any revenue generated, will be logged against this id.

mobileAdRegister *appKey*

Creating & Managing Ads

Once your app key has been registered, you are now ready to create an ad. To do so, use the command **mobileAdCreate**.

mobileAdCreate *ad*, [*type*], [*topLeft*], [*metaData*]

The parameters are as follows:

- *type*: The type of ad. One of "banner", "text" or "full screen". Defaults to "banner".
- *name*: The name of the ad to create. This will be used to reference the ad throughout its lifetime.
- *topLeft*: The location in pixels of the top left corner of the ad. Defaults to 0,0.
- *metaData*: An array of values that will be used to target the ad. The keys are as follows:
 - **refresh**: A value in seconds defining how often the ad will refresh, between 30 and 300. Defaults to 120.
 - **age**: An integer defining the expected age of the target user.
 - **gender**: The expected gender of the target user. The allowed values are M, m F, f, Male, Female.
 - **distribution id**: The distribution Channel ID (559 for banner ads and full screen ads, 600 for text ads).
 - **phone number**: The user's mobile number (MSISDN format, with international prefix).
 - **keywords**: Keywords relevant to this user's specific session (comma separated, without spaces).
 - **coordinates**: GPS ISO code location data in latitude, longitude format.
 - **location**: - A comma separated list of countries, state/province, city.

Ads can be deleted at any time using to command **mobileAdDelete**.

mobileAdDelete *ad*

You can get and set the top left of an ad using the following:

mobileAdGetTopLeft(*ad*)

mobileAdSetTopLeft(*ad*, *topLeft*)

The top left is the pixel coordinates of the top left corner of the ad.

You can get and set the visibility of an ad using the following:

mobileAdGetTopVisible(*ad*)

mobileAdSetTopVisible(*ad*, *visible*)

The visible is a boolean, set to true if the ad is visible, false otherwise.

A list of all the currently active ads can be fetched using the function:

mobileAds()

This returns a return-delimited list of the ad names.

Messages

When an add is loaded or refreshed, the message **adLoaded** will be sent to the current card.

adLoaded *default*

Here, *default* is a boolean, set to true if the loaded ad is a default ad.

If a user clicks on an ad, the **adClicked** message will be sent to the current card.

adClicked

If an ad fails to load the **adLoadFailed** message will be sent to the current card.

adLoadFailed

If an ad is about to resize the **adResizeStart** message will be sent to the current card.

adResizeStart

When an ad has finished resizing the **adResizeEnd** message will be sent to the current card.

adResizeEnd

If an ad is about to expand the **adExpandStart** message will be sent to the current card.

adExpandStart

When an ad has finished expanding the **adExpandEnd** message will be sent to the current card.

adExpandEnd

In App Purchasing

Setup

In order to perform in app purchases you must first configure a number of items in iTunesConnect.

Setup a Contract

The first thing to do is make sure you have setup an ‘iOS Paid Applications’ contract. This is done in the ‘Contracts, Tax and Banking’ section of the iTunesConnect account.

Setup the In-App Purchase

If you haven’t already added your app to iTunesConnect you will need to do that first.

<http://lessons.runrev.com/s/lessons/m/4069/1/33065-How-do-I-set-up-an-App-for-Submission-to-iTunes-Connect->

Create your in-app purchase by selecting the application you want to associate it to, and then from the apps mini-page clicking ‘Manage In-App Purchases’ and then ‘Create New’. You will be asked to select a purchase type, set the price and provide various pieces of information. The result will be the creation of an in-app purchase with a unique ‘Product ID’. It is this ID that you will use while implementing your in-app purchase in LiveCode.

Syntax

Implementing in-app purchasing requires two way communication between your LiveCode app and the AppStore. Here is the basic process:

- Your app sends a request to purchase a specific in-app purchase to the AppStore
- The AppStore verifies this and attempts to take payment

- If payment is successful the AppStore notifies your app
- Your app unlocks features or downloads new content / fulfils the in-app purchase
- Your app tells the AppStore that all actions associated with the purchase have been completed
- AppStore logs that in-app purchase has been completed

Commands & Functions

To determine if in app purchasing is available use:

mobileCanMakePurchase()

Returns *true* if in-app purchases can be made, *false* if not.

Throughout the purchase process, the AppStore sends **purchaseStateUpdate** messages to your app which report any changes in the status of active purchases. The receipt of these messages can be switched on and off using:

mobileEnablePurchaseUpdates

mobileDisablePurchaseUpdates

To create a new purchase use:

mobilePurchaseCreate *productID*

The *productID* is the identifier of the in-app purchase you created in iTunesConnect and wish to purchase. A *purchaseID* is placed in the result which is used to identify the purchase.

To query the status of an active purchase use:

mobilePurchaseState(*purchaseID*)

The *purchaseID* is the identifier of the purchase request. One of the following is returned

- *initialized* - the purchase request has been created but not sent. In this state additional properties such as the item quantity can be set.
- *sendingRequest* - the purchase request is being sent to the store / marketplace.
- *paymentReceived* - the requested item has been paid for. The item should now be delivered to the user and confirmed via the **mobilePurchaseConfirmDelivery** command.
- *complete* - the purchase has now been paid for and delivered
- *restored* - the purchase has been restored after a call to **mobileRestorePurchases**. The purchase should now be delivered to the user and confirmed via the **mobilePurchaseConfirmDelivery** command.
- *cancelled* - the purchase was cancelled by the user before payment was received
- *error* - An error occurred during the payment request. More detailed information is available from the **mobilePurchaseError** function

To get a list of all known active purchases use:

mobilePurchases()

It returns a return-separated list of purchase identifiers, of restored or newly bought purchases

which have yet to be confirmed as complete.

Before sending an your purchase request using the **mobilePurchaseSendRequest**, you can configure aspects of it by setting certain properties. This is done using:

mobilePurchaseSet *purchaseID, property, value*

The parameters are as follows:

- *purchaseId* - the identifier of the purchase request to be modified
- *property* - the name of the property to be set
- *value* - the value to set the property to

Properties which can be set include:

- *quantity* - specifies the quantity of the in-app purchase to buy (default 1)

As well as setting properties, you can also retrieve them using:

mobilePurchaseGet(*purchaseID, property*)

The parameters are as follows:

- *purchaseID* - the identifier of the purchase request
- *property* - the name of the purchase request property to get

Properties which can be queried include:

- *quantity* - amount of item purchased
- *productID* - identifier of the purchased product
- *purchaseDate* - date the purchase / restore request was sent
- *transactionIdentifier* - the unique identifier for a successful purchase / restore
- *receipt* - block of data that can be used to confirm the purchase from a remote server with the itunes store
- *originalPurchaseDate* - for restored purchases - date of the original purchase
- *originalTransactionIdentifier* - for restored purchases - the transaction identifier of the original purchase
- *originalReceipt* - for restored purchases - the receipt for the original purchase

Once you have created and configured your purchase you can send it to the AppStore to start the purchase using:

mobilePurchaseSendRequest *purchaseID*

Here, *purchaseID* is the identifier of the purchase request. This command should only be called on a purchase request in the 'initialized' state.

Once you have sent your purchase request and it has been confirmed you can then unlock or download new content to fulfil the requirements of the in-app purchase. You must inform the AppStore once you have completely fulfilled the purchase using:

mobilePurchaseConfirmDelivery *purchaseID*

Here, *purchaseID* is the identifier of the purchase request.

mobilePurchaseConfirmDelivery should only be called on a purchase request in the 'paymentReceived' or 'restored' state. If you don't send this confirmation before the app is closed, **purchaseStateUpdate** messages for the purchase will be sent to your app the next time updates are enabled by calling the **mobileEnableUpdates** command.

To instruct the AppStore to re-send notifications of previously completed purchases use:

mobileRestorePurchases

This would typically be called the first time an app is run after installation on a new device to restore any items bought through the app.

To get more detailed information about errors in the purchase request use:

mobilePurchaseError(*purchaseID*)

The *purchaseID* is the identifier of the purchase request. It returns the error information for purchase requests in the "error" state.

Messages

The AppStore sends **purchaseStateUpdate** messages to notifies your app of any changes in state to the purchase request. These messages continue until you notify the AppStore that the purchase is complete or it is cancelled.

purchaseStateUpdate *purchaseID, state*

The *state* can be any one of the following:

- *initialized* - the purchase request has been created but not sent. In this state additional properties such as the item quantity can be set.
- *sendingRequest* - the purchase request is being sent to the store / marketplace
- *paymentReceived* - the requested item has been paid for. The item should now be delivered to the user and confirmed via the **mobilePurchaseConfirmDelivery** command
- *complete* - the purchase has now been paid for and delivered
- *restored* - the purchase has been restored after a call to **mobileRestorePurchases**. The purchase should now be delivered to the user and confirmed via the **mobilePurchaseConfirmDelivery** command
- *cancelled* - the purchase was cancelled by the user before payment was received
- *error* - An error occurred during the payment request. More detailed information is available from the **mobilePurchaseError** function

iOS Native Controls

Low-level support has been added for creating and manipulating some native iOS controls (views). There are generic set of commands and functions for creating and configuring certain UIView subclasses which then layer above the currently displayed stack.

At present, there is an implementation for the UIWebView control (*browser*) and for the UIScrollView control (*scroller*).

To create a native control use:

iphoneControlCreate *controlType*, [*name*]

Where *controlType* is the type of control you wish to create – either "browser" or "scroller" and *name* is an optional string to use to identify the control in the other functions. The *name* must be unique amongst all existing controls and cannot be an integer. The unique (numeric) id for the new control is returned in **the result**.

To destroy a native control use:

iphoneControlDelete *idOrName*

Where *idOrName* is the numeric id returned by *iphoneControlCreate*, or the *name* of the control if provided.

A list of all native controls currently in existence can be fetched using the **iphoneControls()** function. This returns a return-delimited list of control names or ids. Where a control has a name that is used, otherwise its id is used.

Once such a control has been created, you can configure it using:

iphoneControlSet *idOrName*, *property*, *value*

Where

- *idOrName* is the numeric id returned by *iphoneControlCreate*, or the name of the control if provided.
- *property* is the name of the property to change
- *value* is the value of the property to change to

Properties can also be read by using **iphoneControlGet**(*id*, *property*).

Control specific behavior can be invoked by using:

iphoneControlDo *idOrName*, *action*, ...

Where *action* is what is to be done, and the parameters are action/control specific.

While in the context of a message that has been dispatched from a native control, you can use the **iphoneControlTarget()** function to fetch the name (or id, if no name is set) of the control that sent the message.

In general, any messages dispatched by the native control will be sent to the object containing the script which created it, this also works correctly with behaviors – messages being sent to the object referring to the behavior, and not the behavior's object.

All controls (UIView)

All native controls are descendants of the UIView class and therefore inherit a common set of properties and actions.

Properties

id	read-only	The unique (integer) id of the control.
name	read-only	The unique name of the control if one was provided at creation time,

		empty otherwise.
rect	read/write	The bounds of the control, relative to the top-left of the card.
visible	read/write	Set to true or false to determine whether the control should be displayed.
opaque	read/write	Set to false if the control should be rendered with transparency. In particular, set this control to true if you set a backgroundColor that is not fully opaque.
alpha	read/write	Set to a value between 0 and 255 to blend the control with any controls underneath it.
backgroundColor	read/write	Set to either a standard color name, or a string of the form <i>red,green,blue</i> or <i>red,green,blue,alpha</i> . Where the components are integers in the range 0 to 255.

Browser control – UIWebView

A UIWebView control is created using a control type of "browser". For full details of what the UIWebView control is capable of, and background about it see the [iOS reference document](#).

*Example: You can find a simple stack using the native browser control features in the IDE resources folder (open using the **Help > Example Stacks and Resources** menu item). The stack can be found at: **Mobile Examples/Browser Example.livecode***

Properties

url	read/write	The url to be loaded into the web-view.
autoFit	read/write	Set to true or false to determine whether the page will be scaled to fit the rect of the control (wraps the <i>scalesPageToFit</i> property of UIWebView).
canAdvance	read-only	Returns true if there is a next page in the history (wraps the <i>canGoForward</i> property of UIWebView).
canRetreat	read-only	Returns true if there is a previous page in the history (wraps the <i>canGoBack</i> property of UIWebView).
delayRequests	read/write	Set to true to cause the <i>loadRequest</i> message to be sent. Note that in this mode, web-pages that trigger sub-document loads (such as those containing iframes) will not load correctly.
dataDetectorTypes	read/write	Use this property to specify the types of data that should be automatically converted to clickable URLs in the web-view. It is specified as a comma-delimited list of one or more of the following values: <ul style="list-style-type: none"> • phone number • calendar event (iOS4.0+) • link

- address (iOS4.0+)

(this property wraps the *dataDetectorTypes* property of `UIWebView`).

`allowsInlinePlayback` read/write Set to true if the web-view should allow media files to be played 'inline' in the page (wraps the *allowsInlineMediaPlayback* property of the `UIWebView`).

Note that this property is only available on iOS4.0 and later

`mediaPlaybackRequiresUserAction` read/write Set to false to allow media files to play automatically in the web-view (wraps the *mediaPlaybackRequiresUserAction* property of the `UIWebView`).

Note that this property is only available on iOS4.0 and later.

`scrollingEnabled` read/write Whether or not the browser can be scrolled (boolean).

`canBounce` read/write Determines whether the scroller will 'bounce' when it hits the edge of the `contentRect` (boolean)

Actions

`iphoneControlDo` *id*, "advance"

Move forward through the history (wraps the *goForward* method of `UIWebView`).

`iphoneControlDo` *id*, "retreat"

Move backward through the history (wraps the *goBack* method of `UIWebView`).

`iphoneControlDo` *id*, "reload"

Reload the current page (wraps the *reload* method of `UIWebView`).

`iphoneControlDo` *id*, "stop"

Stop loading the current page (wraps the *stopLoading* method of `UIWebView`).

`iphoneControlDo` *id*, "load", *baseUrl*, *htmlText*

Loads as page consisting of the given *htmlText* with the given *baseUrl* (wraps the *loadHtmlString* method of `UIWebView`).

`iphoneControlDo` *id*, "execute", *script*

Evaluates the given JavaScript *script* in the context of the current page (wraps the *stringByEvaluationJavaScriptFromString* method of `UIWebView`).

Messages

`browserStartedLoading` *url*

Sent when the given *url* has started to load (sent in response to the *webViewDidFinishLoad* delegate method).

`browserFinishedLoading` *url*

Sent when the given *url* has finished loading (sent in response to the *webViewDidStartLoad* delegate method).

browserLoadRequest *url, type*

Sent when the given url has been requested. The reason for the request is specified in *type* which can be one of *click, submit, navigate, reload, resubmit* or *other*.

Not passing the message will cause the load request to not go ahead.

This message is only sent if *delayRequests* has been set to true. Note that delaying requests can cause web-pages that load pages into sub-documents to not work correctly.

(This message is sent in response to the *webView:shouldStartLoadWithRequest:* delegate method).

browserLoadFailed *url, error*

Sent when the given url fails to load (sent in response to the *webView:didFailLoadWithError:* delegate method).

browserLoadRequested *url, type*

Sent when the given url has been requested. The reason for the request is specified in *type* which can be one of *click, submit, navigate, reload, resubmit* or *other*.

If *delayRequests* has been set to *true*, this message will only be sent if the **browserLoadRequest** message has been passed. If *delayRequests* is *false*, this message will always be sent.

(This message is sent in response to the *webView:shouldStartLoadWithRequest:* delegate method).

Scroller control – UIScrollView

A UIScrollView control is created using a control type of "scroller". For full details of what the UIScrollView control is capable of, and background about it see the [iOS reference document](#).

Rather than act as a container for other controls, the 'scroller' is intended to be used as an overlay on part of the screen you wish to interact with the proper iOS scrollbars. By responding to the various scroller messages, you can move LiveCode controls or set the appropriate scroll properties of group and fields to get a native scrolling effect.

*Example: You can find a simple stack using the native scroller control features in the IDE resources folder (open using the **Help > Example Stacks and Resources** menu item). The stack can be found at: **Mobile Examples/Scroller Example.livecode***

Properties

contentRect	read/write	The rectangle over which the scroller scrolls. This is distinct from the scroller's rect, and is essentially the minimum/maximum values of the scroll properties (adjusted for the size of the scroller). This is a comma-separated list of four integers, describing a rectangle.
hScroll	read/write	The horizontal scroll offset. This is an integer value ranging between the left and right of the contentRect, adjusting appropriately for the size of the scroller (i.e.

		contentRect.left to contentRect.right – rect.width).
vScroll	read/write	The vertical scroll offset. This is an integer value ranging between the top and bottom of the contentRect, adjusting appropriately for the size of the scroller (i.e. contentRect.top to contentRect.bottom – rect.height).
canBounce	read/write	Determines whether the scroller will 'bounce' when it hits the edge of the contentRect (maps to the UIScrollView <i>bounces</i> property). This is a boolean value.
canScrollToTop	read/write	Determines whether a touch on the status bar causes the scroll to scroll to the top (maps to the UIScrollView <i>scrollsToTop</i> property). This is a boolean value.
canCancelTouches	read/write	Determines whether the scroller is allowed to cancel an touch that has been passed through to the underlying controls when it thinks its a scroll gesture (maps to the UIScrollView <i>canCancelContentTouches</i> property). This is a boolean value.
delayTouches	read/write	Determines whether the scroller delays passing on touch-down events until it has determined whether it is the start of a scroll gesture or not (maps to the UIScrollView <i>delaysContentTouches</i> property). This is a boolean value.
pagingEnabled	read/write	Determines whether scrolling stops on multiples of the scroller's bounds (maps to the UIScrollView <i>pagingEnabled</i> property). This is a boolean value.
decelerationRate	read/write	Determines the rate at which scrolling decelerates when a finger is lifted (maps to the UIScrollView <i>decelerationRate</i> property). This can be either <i>normal</i> , <i>fast</i> or a real number.
indicatorStyle	read/write	Determines the style of indicators to display (maps to the UIScrollView <i>indicatorStyle</i> property). This can be one of <i>default</i> , <i>white</i> or <i>black</i> .
indicatorInsets	read/write	Determines how far from the edge of the scrollers bounds, the indicators are inset (maps to the UIScrollView <i>scrollIndicatorInsets</i> property). This is a comma-separated list of four integers, describing the left, top, right and bottom inset distances.
scrollingEnabled	read/write	Determines whether touches on the scroller cause scrolling (maps to the UIScrollView <i>scrollEnabled</i> property). This is a boolean value.
hIndicator	read/write	Determines whether the horizontal indicator should be displayed when scrolling (maps to the UIScrollView

showsHorizontalScrollIndicator property).

This is a boolean value.

<code>vIndicator</code>	read/write	Determines whether the vertical indicator should be displayed when scrolling (maps to the <code>UIScrollView</code> <i>showsVerticalScrollIndicator</i> property). This is a boolean value.
<code>lockDirection</code>	read/write	Determines whether scrolling is locked to the initial direction a drag occurs in (maps to the <code>UIScrollView</code> <i>directionalLockEnabled</i> property). This is a boolean value.
<code>tracking</code>	read-only	Returns true if the scroller is monitoring a touch for the start of a scroll action (maps to the <code>UIScrollView</code> <i>tracking</i> property). This is a boolean value.
<code>dragging</code>	read-only	Returns true if the scroller is currently performing a scroll action (maps to the <code>UIScrollView</code> <i>dragging</i> property). This is a boolean value.
<code>decelerating</code>	read-only	Returns true if the scroll is currently decelerating after a scroll action (maps to the <code>UIScrollView</code> <i>decelerating</i> property). This is a boolean value.

Actions

iphoneControlDo *id*, "flashScrollIndicators"

Makes the scroll indicators flash momentarily.

Messages

scrollerBeginDecelerate

This message is sent when scrolling is about to start decelerating.

scrollerEndDecelerate

This message is sent when scrolling has finished decelerating.

scrollerScrollToTop

This message is sent when the scroller is scrolled to top by touching the status bar.

scrollerBeginDrag

This message is sent when a scroll initiating drag is started.

scrollerEndDrag *didDecelerate*

This message is sent when a scroll initiating drag is finished.

scrollerDidScroll *hScroll*, *vScroll*

This message is sent when the scroll properties of the scroller have changed.

Player control – MPMoviePlayerController

An MPMoviePlayerController control is created using a control type of "player". For full details of what the MPMoviePlayerController control is capable of, and background about it see the [iOS Reference Document](#).

On iOS versions < 4.2 you can only have a single MPMoviePlayerController instance in existence at once. Therefore, on these iOS versions you can only create a single native player control at any one time, and while one is present you cannot use the **play video** command to play fullscreen videos.

On iOS version >= 4.2, while you can have multiple MPMoviePlayerController instances (and thus multiple native player controls) simultaneously, only a single one can be playing at any one time.

Note: The player control is only available on iOS 4.0 and later.

Properties

filename	read/write	The filename of URL of the media to play. Setting the filename of the player automatically 'prepares' the movie for playback.
fullscreen	read/write	Determines whether the player's content is played fullscreen. This is a boolean value.
preserveAspect	read/write	Determines whether the player's content should preserve its aspect ratio when scaled to fit within the control's bounds. This is a boolean value.
showController	read/write	Determines whether the controller will be displayed over the content. This is a boolean value.
useApplicationAudioSession	read/write	Determines whether the movie uses a system-supplied audio session or not (maps to the native useApplicationAudioSession property). This is a boolean value.
shouldAutoplay	read/write	Determines whether the playback of network-based content begins automatically when there is enough buffered data to ensure uninterrupted playback (maps to the native shouldAutoplay property). This is a boolean value.
looping	read/write	Determines whether the playback of the movie should loop indefinitely. This is a boolean value.
allowsAirPlay	read/write	Determines whether a control should be presented to allow the user to choose AirPlay-enabled hardware for playback (maps to the native allowsAirPlay property). This is a boolean value.

Note: This property is only supported on iOS 4.3 and later.

duration	read-only	<p>The duration of the movie, measured in milliseconds (maps to the native duration property).</p> <p>If the duration of the movie is not yet known, 0 is returned. If the duration is subsequently determined, an appropriate <i>playerPropertyAvailable</i> message is sent and the property updated.</p> <p>This is an integer value.</p>
playableDuration	read-only	<p>The amount of currently playable content, measured in milliseconds (maps to the native playableDuration property).</p> <p>This is an integer value.</p>
currentTime	read/write	<p>The current position of the playhead, measured in milliseconds (maps to the native currentTime property).</p> <p>This is an integer value.</p>
startTime	read/write	<p>The position at which playback should start, measured in milliseconds (maps to the native startTime property).</p> <p>This is an integer value.</p>
endTime	read/write	<p>The position at which playback should end, measured in milliseconds (maps to the native endTime property).</p> <p>This is an integer value.</p>
playRate	read/write	<p>The current playback rate for the player (maps to the native playRate property).</p> <p>This represents a multiplier for the default playback rate of the current content. A value of 0.0 indicates playback is stopped, while a value of 1.0 indicates normal speed. Positive values indicate forward playback, while negative values indicate reverse playback.</p> <p>This is real value.</p>
loadState	read-only	<p>The network load state of the player (maps to the native loadState property).</p> <p>This is a comma-delimited list of zero or more of the following:</p> <ul style="list-style-type: none"> • <i>playable</i> – enough data is available to start playing, but it may run out before playback finishes • <i>playthrough</i> – enough data has been buffered for playback to continue uninterrupted • <i>stalled</i> – buffer of data has stalled and playback may pause automatically if the player runs out of data. <p>This is a string value.</p>
playbackState	read-only	<p>The current playback state of the player (maps to the native playbackState property).</p>

This is one of the following values:

- *stopped* – playback is stopped and will commence from the beginning when started.
- *playing* – playback is current underway
- *paused* – playback is paused and will resume from the point it was paused
- *interrupted* – playback is temporarily interrupted, perhaps because the buffer ran out of content
- *seeking forward* – the player is currently seeking towards the end of the movie
- *seeking backward* – the player is currently seeking towards the beginning of the movie

`naturalSize` read-only The raw size of a video frame in pixels (maps to the native `naturalSize` property).

This is a comma-separated list of two integers, the first is the width, the second is the height.

Actions

iphoneControlDo *id*, "play"

Start playing the content of the player.

iphoneControlDo *id*, "pause"

Pause the content at the current position.

iphoneControlDo *id*, "prepareToPlay"

Make the content ready to play, but don't actually commence playback.

iphoneControlDo *id*, "stop"

Stop playing the content of the player.

iphoneControlDo *id*, "begin seeking forward"

Start seeking forward through the content of the player.

iphoneControlDo *id*, "begin seeking backward"

Start seeking backward through the content of the player.

iphoneControlDo *id*, "end seeking"

Stop seeking through the content of the player.

iphoneControlDo *id*, "snapshot" | "snapshot exactly", *time*, [*maxWidth*, *maxHeight*]

Take a snapshot of the movie at *time* milliseconds from the beginning. If the exactly form is specified the frame produced will be as close as possible to *time*, otherwise the nearest key-frame will be used.

If *maxWidth* and *maxHeight* are specified, the snapshot will be scaled to fit within a rectangle

of that size but preserving the frame's aspect ratio.

The snapshot is made available as a new image object cloned from **the `templateImage`**, with data in the format as specified by the global **`paintCompression`** property.

Messages

playerPropertyAvailable *propertyName*

Enough data has become available to make the given *propertyName* available. Properties that might not be available immediately are *duration* and *naturalSize*.

playerProgressChanged

The *loadState* property has changed value.

playerEnterFullscreen

The player has entered full screen mode.

playerLeaveFullscreen

The player has left full screen mode.

playerMovieChanged

The content of the player has changed.

playerFinished

The content has finished playing through.

playerStopped

The content finished playing through due to a user exit.

playerError

The content finished playing due to an error.

Input control – UITextField

A UITextField control is created using a control type of "input". For full details of what the UITextField control is capable of, and background about it see the [iOS reference document](#).

The input control allows the editing of a single line of text, with the 'return' key ending editing and allowing the application to perform an appropriate action.

Properties

text	read/write	The content of the control (maps to the native text property). This is a string value.
unicodeText	read/write	The content of control encoded as UTF-16 (maps to the native text property). This is a binary value.
textColor	read/write	The color to use for the text in control (maps to the native textColor)

property).

This is either a standard color name, or a string of the form *red,green,blue* or *red,green,blue,alpha*. Where the components are integers in the range 0 to 255.

fontName	read/write	The name of the font to use for text in the control. This is a string value.
fontSize	read/write	The size of the font to use for text in the control. This is an integer value.
textAlign	read/write	The alignment to use for text in the control (maps to the native <code>textAlignment</code> property). This is one of <i>left</i> , <i>center</i> or <i>right</i> .
autoFit	read/write	Determines whether the size of the text is scaled so that it fits within the width of the control down to the size specified by the <code>minimumFontSize</code> property (maps to the native <code>adjustsFontSizeToFitWidth</code> property). This is a boolean value.
minimumFontSize	read/write	The minimum size text should be shrunk to to satisfy <code>autoFit</code> requirements (maps to the native <code>minimumFontSize</code> property). This is an integer value,
autoClear	read/write	Determines whether the control is emptied automatically when editing begins (maps to the native <code>clearsOnBeginEditing</code> property).
clearButtonMode	read/write	The display mode of the standard 'clear' button overlay (maps to the native <code>clearButtonMode</code> property). This is one of the following: <ul style="list-style-type: none"> • <i>never</i> – never display the clear button • <i>while editing</i> – only display the clear button while editing • <i>unless editing</i> – only display the clear button when not editing • <i>always</i> – always display the clear button
borderStyle	read/write	The type of border to draw around the control (maps to the native <code>borderStyle</code> property). This is one of the following: <ul style="list-style-type: none"> • <i>none</i> – do not draw a border • <i>line</i> – draw a thin line around the control • <i>bezel</i> – draw a bezel-style border around the control • <i>rounded</i> – draw a rounded rectangle style border around the control

editing	read-only	Indicates whether the control is currently being edited or not (maps to the native editing property). This is a boolean value.
autoCapitalizationType	read/write	Determines when the shift-key is automatically enabled (maps to the native autocapitalizationType property). This is one of the following: <ul style="list-style-type: none"> • <i>none</i> – the shift-key is never automatically enabled • <i>words</i> – the shift-key is enabled at the start of words • <i>sentences</i> – the shift-key is enabled at the start of sentences • <i>all characters</i> – the shift-key is enabled at the start of each character
autoCorrectionType	read/write	Determines whether auto-correct behavior should be enabled (maps to the native autocorrectionType property). This is one of the following: <ul style="list-style-type: none"> • <i>default</i> – use the appropriate auto-correct behavior for the current script system. • <i>no</i> – disable auto-correct behavior • <i>yes</i> – enable auto-correct behavior
manageReturnKey	read/write	Determines whether the return key should be automatically enabled or disabled based on whether the control has content or not (maps to the native enablesReturnKeyAutomatically property). This is a boolean value.
keyboardStyle	read/write	Determines what kind of appearance the keyboard has (maps to the native keyboardAppearance property). This is one of the following: <ul style="list-style-type: none"> • <i>default</i> – the standard keyboard appearance • <i>alert</i> – the keyboard that is suitable for an alert panel (iPhone/iPod only)
keyboardType	read/write	Determines what kind of keyboard should be displayed (maps to the native keyboardType property). This is one of the following: <ul style="list-style-type: none"> • <i>default</i> – the normal keyboard • <i>alphabet</i> – the alphabetic keyboard • <i>numeric</i> – the numeric keyboard with punctuation • <i>url</i> – the url entry keyboard • <i>number</i> – the number pad keyboard

- *phone* – the phone number pad keyboard
- *contact* – the phone contact pad keyboard
- *email* – the email keyboard
- *decimal* – the decimal numeric pad keyboard (iOS 4.1+)

returnKeyType read/write Determines what kind of return-key the keyboard should have (maps to the native `returnKeyType` property).

This is one of the following:

- *default* – the normal return key
- *go* – the 'Go' return key
- *google* – the 'Google' return key
- *join* – the 'Join' return key
- *next* – the 'Next' return key
- *route* – the 'Route' return key
- *search* – the 'Seach' return key
- *send* – the 'Send' return key
- *yahoo* – the 'Yahoo' return key
- *done* – the 'Done' return key
- *emergency call* – the 'emergency call' return key

contentType read/write Determines what kind of content the control contains.

This is one of the following:

- *plain* – plain, unstyled text
- *password* – plain text displayed in the standard iOS password style.

enabled read/write Determines whether the control is enabled or not.

This is a boolean value.

Actions

iphoneControlDo *id*, "focus"

Focus on the control, displaying the keyboard if necessary.

Messages

inputBeginEditing

The control has become focused and editing has commenced.

inputEndEditing

The control has lost focus and editing has ceased.

inputTextChanged

An editing operation has taken place and the content of the control has changed.

inputReturnKey

The return key has been pressed and focus removed from the input control.

Multi-line Input control – UITextView

A UITextView control is created using a control type of "multiline". For full details of what the UITextView control is capable of, and background about it see the [iOS reference document](#).

The multiline input control allows the editing of multiple lines of text, with the 'return' key ending each line.

The UITextView control inherits from the UIScrollView control and subsequently implements many of the same properties as the scroller control. For full details of what the UIScrollView control is capable of, and background about it see the [iOS reference document](#).

Properties

text	read/write	The content of the control (maps to the native text property). This is a string value.
unicodeText	read/write	The content of control encoded as UTF-16 (maps to the native text property). This is a binary value.
textColor	read/write	The color to use for the text in control (maps to the native textColor property). This is either a standard color name, or a string of the form <i>red,green,blue</i> or <i>red,green,blue,alpha</i> . Where the components are integers in the range 0 to 255.
fontName	read/write	The name of the font to use for text in the control. This is a string value.
fontSize	read/write	The size of the font to use for text in the control. This is an integer value.
textAlign	read/write	The alignment to use for text in the control (maps to the native textAlignment property). This is one of <i>left</i> , <i>center</i> or <i>right</i> .
editing	read-only	Indicates whether the control is currently being edited or not (maps to the native editing property). This is a boolean value.
autoCapitalization	read/write	Determines when the shift-key is automatically enabled (maps to the

Type		native autocapitalizationType property). This is one of the following: <ul style="list-style-type: none"> • <i>none</i> – the shift-key is never automatically enabled • <i>words</i> – the shift-key is enabled at the start of words • <i>sentences</i> – the shift-key is enabled at the start of sentences • <i>all characters</i> – the shift-key is enabled at the start of each character
autoCorrectionType	read/write	Determines whether auto-correct behavior should be enabled (maps to the native autocorrectionType property). This is one of the following: <ul style="list-style-type: none"> • <i>default</i> – use the appropriate auto-correct behavior for the current script system. • <i>no</i> – disable auto-correct behavior • <i>yes</i> – enable auto-correct behavior
manageReturnKey	read/write	Determines whether the return key should be automatically enabled or disabled based on whether the control has content or not (maps to the native enablesReturnKeyAutomatically property). This is a boolean value.
keyboardStyle	read/write	Determines what kind of appearance the keyboard has (maps to the native keyboardAppearance property). This is one of the following: <ul style="list-style-type: none"> • <i>default</i> – the standard keyboard appearance • <i>alert</i> – the keyboard that is suitable for an alert panel (iPhone/iPod only)
keyboardType	read/write	Determines what kind of keyboard should be displayed (maps to the native keyboardType property). This is one of the following: <ul style="list-style-type: none"> • <i>default</i> – the normal keyboard • <i>alphabet</i> – the alphabetic keyboard • <i>numeric</i> – the numeric keyboard with punctuation • <i>url</i> – the url entry keyboard • <i>number</i> – the number pad keyboard • <i>phone</i> – the phone number pad keyboard • <i>contact</i> – the phone contact pad keyboard • <i>email</i> – the email keyboard

		<ul style="list-style-type: none"> • <i>decimal</i> – the decimal numeric pad keyboard (iOS 4.1+)
returnKeyType	read/write	<p>Determines what kind of return-key the keyboard should have (maps to the native returnKeyType property).</p> <p>This is one of the following:</p> <ul style="list-style-type: none"> • <i>default</i> – the normal return key • <i>go</i> – the 'Go' return key • <i>google</i> – the 'Google' return key • <i>join</i> – the 'Join' return key • <i>next</i> – the 'Next' return key • <i>route</i> – the 'Route' return key • <i>search</i> – the 'Seach' return key • <i>send</i> – the 'Send' return key • <i>yahoo</i> – the 'Yahoo' return key • <i>done</i> – the 'Done' return key • <i>emergency call</i> – the 'emergency call' return key
contentType	read/write	<p>Determines what kind of content the control contains.</p> <p>This is one of the following:</p> <ul style="list-style-type: none"> • <i>plain</i> – plain, unstyled text • <i>password</i> – plain text displayed in the standard iOS password style.
enabled	read/write	<p>Determines whether the control is enabled or not.</p> <p>This is a boolean value.</p>
editable	read/write	<p>Determines whether the text field can be edited. This is a boolean value.</p>
dataDetectorTypes	read/write	<p>Determines what types of data should be detected and automatically converted to clickable URLs.</p> <p>This is a comma delimited list of none or more of the following:</p> <ul style="list-style-type: none"> • phone number • calendar event – iOS4.0+ • link • address - iOS4.0+
selectedRange	read/write	<p>Determines the start index and the length of the text that is to appear as selected.</p>
contentRect	read only	<p>The rectangle over which the scroller scrolls. This is distinct from the scroller's rect, and is essentially the minimum/maximum values of the scroll properties (adjusted for the size of the scroller).</p>

		This is a comma-separated list of four integers, describing a rectangle.
hScroll	read/write	The horizontal scroll offset. This is an integer value ranging between the left and right of the contentRect, adjusting appropriately for the size of the scroller (i.e. contentRect.left to contentRect.right – rect.width).
vScroll	read/write	The vertical scroll offset. This is an integer value ranging between the top and bottom of the contentRect, adjusting appropriately for the size of the scroller (i.e. contentRect.top to contentRect.bottom – rect.height).
canBounce	read/write	Determines whether the scroller will 'bounce' when it hits the edge of the contentRect (maps to the UIScrollView <i>bounces</i> property). This is a boolean value.
canScrollToTop	read/write	Determines whether a touch on the status bar causes the scroll to scroll to the top (maps to the UIScrollView <i>scrollsToTop</i> property). This is a boolean value.
canCancelTouches	read/write	Determines whether the scroller is allowed to cancel an touch that has been passed through to the underlying controls when it thinks its a scroll gesture (maps to the UIScrollView <i>canCancelContentTouches</i> property). This is a boolean value.
delayTouches	read/write	Determines whether the scroller delays passing on touch-down events until it has determined whether it is the start of a scroll gesture or not (maps to the UIScrollView <i>delaysContentTouches</i> property). This is a boolean value.
pagingEnabled	read/write	Determines whether scrolling stops on multiples of the scroller's bounds (maps to the UIScrollView <i>pagingEnabled</i> property). This is a boolean value.
decelerationRate	read/write	Determines the rate at which scrolling decelerates when a finger is lifted (maps to the UIScrollView <i>decelerationRate</i> property). This can be either <i>normal</i> , <i>fast</i> or a real number.
indicatorStyle	read/write	Determines the style of indicators to display (maps to the UIScrollView <i>indicatorStyle</i> property). This can be one of <i>default</i> , <i>white</i> or <i>black</i> .
indicatorInsets	read/write	Determines how far from the edge of the scrollers bounds, the indicators are inset (maps to the UIScrollView <i>scrollIndicatorInsets</i> property). This is a comma-separated list of four integers, describing the left, top, right and bottom inset distances.

scrollingEnabled	read/write	Determines whether touches on the scroller cause scrolling (maps to the UIScrollView <i>scrollEnabled</i> property). This is a boolean value.
hIndicator	read/write	Determines whether the horizontal indicator should be displayed when scrolling (maps to the UIScrollView <i>showsHorizontalScrollIndicator</i> property). This is a boolean value.
vIndicator	read/write	Determines whether the vertical indicator should be displayed when scrolling (maps to the UIScrollView <i>showsVerticalScrollIndicator</i> property). This is a boolean value.
lockDirection	read/write	Determines whether scrolling is locked to the initial direction a drag occurs in (maps to the UIScrollView <i>directionalLockEnabled</i> property). This is a boolean value.
tracking	read-only	Returns true if the scroller is monitoring a touch for the start of a scroll action (maps to the UIScrollView <i>tracking</i> property). This is a boolean value.
dragging	read-only	Returns true if the scroller is currently performing a scroll action (maps to the UIScrollView <i>dragging</i> property). This is a boolean value.
decelerating	read-only	Returns true if the scroll is currently decelerating after a scroll action (maps to the UIScrollView <i>decelerating</i> property). This is a boolean value.

Actions

iphoneControlDo *id*, "focus"

Focus on the control, displaying the keyboard if necessary.

iphoneControlDo *id*, "scrollToVisibleRange"

Ensures the given text range is visible in the view by changing the scroll of the field.

- rangeStart - The start index of the text that is to be made visible.
- rangeLength - The length of the text that is to be made visible.

Messages

inputBeginEditing

The control has become focused and editing has commenced.

inputEndEditing

The control has lost focus and editing has ceased.

inputTextChanged

An editing operation has taken place and the content of the control has changed.

inputReturnKey

The return key has been pressed and focus removed from the input control.

scrollerBeginDecelerate

This message is sent when scrolling is about to start decelerating.

scrollerEndDecelerate

This message is sent when scrolling has finished decelerating.

scrollerScrollToTop

This message is sent when the scroller is scrolled to top by touching the status bar.

scrollerBeginDrag

This message is sent when a scroll initiating drag is started.

scrollerEndDrag *didDecelerate*

This message is sent when a scroll initiating drag is finished.

scrollerDidScroll *hScroll, vScroll*

This message is sent when the scroll properties of the scroller have changed.

Miscellaneous Information

Encryption Compliance – HTTPS

Any applications using encryption need to declare this fact to Apple when binaries are submitted in iTunesConnect.

Use of the HTTPS protocol counts as using encryption and as such you must answer 'Yes' to the relevant question when prompted to do so. This may result in you needing to go through the CCATS approval process for your application depending on how the encryption is used.

A useful blog post on this matter can be found here: <http://blog.theanimail.com/iphone-encryption-export-compliance-for-apps>.

For reference, the iOS engine currently utilizes the iOS built-in APIs for HTTPS.

***Note:** It is your responsibility to ensure that you comply with any and all requirements with regards encryption usage – it is not something that can be done 'once' for the iOS engine as it (alone) does not constitute an application nor does it (alone) actually utilize encryption, it merely provides the means to do so.*

Noteworthy Changes

Scrolling problems (R18)

In previous builds, the browser, scroll and photo-picker features suffered a serious bug which caused scrolling and related actions to stick/not-decelerate and generally not work correctly. These problems have been resolved in this release.

Browser loadRequest changes (R18)

Due to technical limitations it has been necessary to change the *loadRequest* callback feature of the browser native control.

The *loadRequest* message is now only sent if the *delayRequests* property has been set to true (it is false by default).

When using the browser with *delayRequests* set to true, please bear in mind that any loads into sub-documents will end up being loaded into the main view meaning many websites will not function correctly.

With *delayRequests* set to false, websites will load as they should however you will not be able to prevent load requests from taking place.

URL progress parameter order (R18)

In previous builds the parameter order of the *urlProgress* message was inconsistent with both other callbacks in the iOS engine, and the *libUrl* status callback.

This has been rectified in this build. The *urlProgress* message now has the url as the *first* parameter rather than the second.

Scripts that make use of this feature will need to be updated and swap the first two parameters around.

Initial orientation handling (R20)

The engine will now read the initial orientation and supported orientations from the plist on startup, and uses these values to initialize the 'allowed orientations' and to ensure the initial orientation is as expected.

For more details see the orientation handling section.

Font metrics (R20)

The vertical metrics (ascent/descent) have been adjusted slightly in this release to make them more consistent with those on the Mac desktop. Assuming the chosen fonts match, then text layout on screen in the IDE will now be much closer, if not identical, to that in the simulator or on a device.

Out-of-bounds scrolling (R20)

The properties *unboundedHScroll* and *unboundedVScroll* have been added to control the 'out-of-

bounds' scrolling feature of group objects. If you are using this feature to provide the 'bounce' effect when using a scroller control in conjunction with a group, then you must now explicitly set the appropriate properties on the group. (Previously the behavior was always on).

Screen metrics (R25)

The `screenRect` and `working screenRect` properties have been changed to reflect the current orientation of the device.

Examples:

- on an iPad for which the current orientation is landscape and the status bar hidden the properties will both return (0, 0, 1024, 768).
- on a non-Retina iPhone in portrait with the status bar displayed, `screenRect` will be (0, 0, 320, 480) and `working screenRect` will be (0, 20, 320, 480).
- on a Retina iPhone in landscape with the status bar displayed and device resolution turned on, `screenRect` will be (0, 0, 640, 960) and `working screenRect` will be (0, 40, 640, 960).

This change has been made as it is more consistent with transparent handling of orientation and improves consistency with the now implemented screen snapshot feature.

Multi-channel sound playback (R29)

The behavior of `iphonePlaySoundOnChannel` has been adjusted in the case where there is no sound currently scheduled, and the `next` is specified. This usage will now cause the sound to be scheduled to play 'now', but instead of playing the channel will be prepared and then immediately paused.

The previous behavior can be obtained by doing `iphoneResumePlayingOnChannel` immediately after the play command, as this has no effect if the channel is already playing.

'Exits on Suspend' support (R30)

The support for changing the value of the 'Exits on Suspend' plist flag in standalone settings has been removed and the property will always be YES. This flag was never directly supported and having it set to NO causes the LiveCode engine to work incorrectly after it is resumed. Support will be reintroduced in due course, when the issues related to its use are resolved.

Engine version integration (4.6.1-dp-2)

The iOS engine branch has been integrated with the main (desktop) engine branch. This brings all the fixes and improvements made to the desktop engine since 4.0 to the iOS engine.

In particular, all platform non-specific syntax and improvements is now available to iOS (where it makes sense) and the iOS externals (revZip, revXML and dbSqlite) have the same set of functionality.

Note: Some new features added since 4.0 to the desktop engine still have to be ported across. This includes public key cryptography and printing to pdf – these are planned for a future release.

Engine internal structure update (5.5.2-dp-1)

From 5.5.2, the iOS engine's internal structure has been changed. Unfortunately this means that all existing externals written for that platform must be updated. [Note that externals updated for 5.5.2 will still load and run in 5.5.1].

The engine now runs using two threads in a co-operative fashion - i.e. only one is executing at a time. The first (main/system) thread is where all system related calls are made - for example, manipulating UIViews or any other system-provided classes. The second (engine/script) thread is where code that executes scripts run.

The reason for this separation is the existing of 'wait' - the ability to block an executing handler while events are processed. On iOS, in order to process events, the system thread must return to the core event loop which iOS manages; however waiting requires running the event loop from nested calls. To make this work, when the engine thread invokes a wait, the engine jumps to the system thread, jumping back when an event occurs.

Simulator support (5.5.3-rc-1)

As of 5.5.3-rc-1, LiveCode has dropped support for the 4.0, 4.1 and 4.2 simulators. See “Choosing an SDK”.

Change Logs and History

Engine Change History

- pre-alpha-3 (2010-03-04)* MW Initial version.
- pre-alpha-4 (2010-03-05)* MW Bold and italic font styles now honoured in font selection
Image picker no longer 'sticks' after selection
GIF images now display
Max width and height parameters added to `iphonePickPhoto`
Import snapshot no longer crashes
- pre-alpha-5 (2010-03-11)* MW Unicode text will now display
Umlauts and other non-ASCII characters will now display
Return key now causes a newline in fields
Crashes when changing image content have been fixed
Export snapshot now makes images with the correct colors
Rotating a non-masked images no longer causes corruption of the image
- pre-alpha-6 (2010-03-18)* MW Answer command now returns its the chosen button in 'it'
Added support for detecting device orientation
Added support for setting interface orientation
Added basic support for `CoreLocation`
Refined control hit-test for touch handling so disabled controls are not targetted.
`mouseLoc` now reports the correct y-coordinate
Added support for mail composition/sending
Corrected file handling functions interpretation of '/'
Added support for `specialFolderPath()`
Fixed problem with incorrect display of animated GIFs
- pre-alpha-7 (2010-03-29)* MW Added basic support for 'play <soundfile>'
Added support for 'beep' system alert
Added support for 'launch url'
Added support for 'the fontNames' and 'the fontStyles'
Added support for 'uniEncode' and 'uniDecode'
Added support for system date/time
Fixed issue with engine not picking up 'Oblique' fonts for italic style
Fixed issue with unicode text not displaying in fields on load
Added support for 'engine' in 'specialFolderPath'
- pre-alpha-8 (2010-04-12)* MW Added support for targeting iPad
Added support for 'the systemVersion'
Added support for 'the machine'
Added support for 'the processor'
Fixed problem with orientation returning portrait misspelt
Improved responsiveness of image picker
Added support for `iphonePickPhoto` on the iPad
- pre-alpha-10 (2010-08-12)* MW Added support for 'play video <filename/url>'
Fixed issues with support for environment properties (the

- systemVersion, the processor, etc.)
 Added support for 'the sound'
 Fixed issue with garbage being returned from specialFolderPath in some cases.
- pre-release-14 (2010-11-10)* MW Added support for 'libUrlDownloadToFile'
 Added support for 'load url'
 Added support for 'post url'
 Added support for status bar configuration
 Added support for building for appstore/ad-hoc
 Added support for visual effects
 Fixed issue with iphonePickPhoto crashing on iOS4
 Fixed issue with some PNGs not displaying correctly
 Fixed issue with graphic effects have inverted colors
 Fixed issue with black screen appearing on startup
 Fixed issues with landscape orientation mode
- release-17 (2010-12-01)* MW Added support for browser native control
 Added support for scroller native control
 Added support for querying current locale and preferred languages
 Added support for 'movieTouched' message while movie playing
 Added support for 'play stop' command while movie playing
 Added support for building iOS apps with evaluation licenses
 Added support for modal pickwheel, and hooked into option menus
 Changed support for orientation handling to leverage built-in iOS mechanism
 Fixed various glitches with movie playback
 Fixed issue with entering accented characters with the iOS keyboard
 Fixed issue with visual effects not working correctly in non-portrait orientation
 Fixed issue with 'the mouseColor' causing a crash
- release-18 (2010-12-10)* MW Added support for opaque, alpha and backgroundColor properties to all native controls.
 Added ability to upload to FTP.
 Added support for ask question/ask password
 Added delayRequests property to browser to control loadRequest message.
 Changed urlProgress callback parameter order for consistency
 Fixed bug with movie controller not working
 Fixed bug with the browser load action not working
 Fixed bug with scroller, browser and photo-picker not scrolling correctly.
 Fixed decelerating property name
 Fixed common native control property getting (rect, visible etc.)
 Fixed bug with browser not loading some pages correctly
 Fixed bug with iphonePickPhoto not returning correct value
- release-19 (2010-12-16)* MW Added support for keyboardActivated and keyboardDeactivated.

- Improved 'pick' and option menu display for iPad
 Hooked URL operation timeouts to *the socketTimeout*
 Fixed bug with pick views not respecting orientation properly
- release-20 (2010-12-19)* MW Added support for setting keyboard type and return style
 Added support for *unboundedHScroll* and *unboundedVScroll* propertie.
 Fixed return value of *iphonePick* command
 Fixed alignment of ask dialog when no title
 Fixed return value of ask dialog when nothing is entered
 Fixed answer and other such commands not working in initial *preOpenStack/preOpenCard/openStack/openCard*
 Fixed issue with nested answer/ask dialogs
 Fixed issue with nested orientationChanged messages
 Revised and improved initial orientation handling
 Made nomenclature for device and interface orientation consistent
 Improved vertical font metrics consistency with the desktop (Mac) engine.
 Made round rectangle corner radius consistent with desktop engine.
- release-21 (2010-12-21)* MW Added support for *the httpHeaders*.
 Added experimental support for multi-channel sound.
 Fixed issue with *iphoneControl* commands not working with a string id.
 Fixed issue with pick-wheel not scrolling correctly.
 Fixed issue with pick-wheel crashing after multiple shows.
 Fixed issue with option menu popup not sending *menuPick*.
- release-22 (2011-01-07)* MW Added support for looping video (iOS 3.2 and later)
 Fixed issue with *stackfiles* not saving on iOS
 Fixed crash on startup when running on iOS 3.1.3 device
 Fixed *movieTouched* message handling on iOS 3.1.3
 Further improved vertical font metrics consistency with the desktop (Mac) engine
- release-23 (2011-01-14)* MW Added support for remaining *UIWebView* properties
 Added ability to determine display scale (retina, or non-retina)
 Added support for visual effects in sub-regions
 Fixed issue with type command and accented chars (9294)
 Fixed issue with pick-wheel causing anomalous keyboard behavior (9295)
 Multi-channel sound is no longer considered experimental
- release-24 (2011-01-24)* MW Added support for *revZip*, *revXML* and *dbSQLite* externals
 Added support for configuring the iOS 'idleTimer'
 Changed iPad popup lists to dismiss after select
 Fixed issue with *iphonePickPhoto* not working correctly with camera import (9303)
 Fixed issue with *export/import* snapshot not working correctly (9307)
 Fixed issue with interface orientation on startup (9314)

- release-25 (2011-01-30)* MW Fixed issue with 'the files' and 'the folders' being urlEncoded
 Added support for import/export snapshot from rect (9343)
 Added support fetching camera info: *iphoneCameraFeatures()*
 Added support for picking from specific camera
 Added support for different background colors to flip visual effect
 Added support for listing native controls: *iphoneControls()*
 Added support for creating named native controls
 Added support for clearing pending interactions with *iphoneClearTouches*
- release-26 (2011-02-04)* MW Change screenRect properties to take into account orientation.
 Fixed issue with movie playback with controller on 3.2 (9319)
 Fixed issue with topLeft of stack being incorrect (9371)
- release-27 (2011-02-08)* MW Fixed issue with sound when movie 'shrunk' on 3.2 (9319)
- release-28 (2011-03-04)* MW Added support for system identifier: *iphoneSystemIdentifier()*
 Improved ask dialog implementation (9379)
 Fixed issue with pixel properties requiring open stack (9419)
 Fixed issue with non-breaking spaces causing compile issues
- release-29 (2011-03-09)* MW Added experimental support for 'player' native control
 Added experimental support for 'input' native control
 Added experimental support for network reachability tracking
 Added experimental support for playing sections of video
 Added support for preparing a sound on a channel without playing
 Added support for pausing and resuming a sound channel
 Added support for querying a sound channel's status
 Fixed issue with rotation and movie playback (9409)
- release-30 (2011-03-13)* MW Added experimental support for improved email composition
 Fixed issue with stack positioning after movie playback (9409)
- release-31 (2011-03-15)* MW After further testing and consideration, removed 'experimental' status from native player control.
 After further testing and consideration, removed 'experimental' from improved email composition support.
 Improved interoperability of play video and native player control on iOS < 4.2.
- release-32 (2011-03-16)* MW Made all *iphoneComposeMail* arguments are optional.
 Tweaked *iphonePick* to use checkmark on iPad.
 Fixed bug with *iphonePick* not returning 0 if nothing selected.
- release-33 (2011-03-17)* MW Support for pattern fills has been implemented.
- release-34 (2011-03-18)* MW After further testing and consideration, removed 'experimental' status from native input control.
 Improved *iphonePickPhoto* on iPad to make it display relative to **the target** and allow orientation changes.
 Added 'inputReturnKey' message to native input control.
 Added 'enabled' property to native input control.
 Fixed issue with orientation lock when displaying fullscreen movies from UIWebViews and native player controls.
 Fixed issue with stack view not being placed corrected after

- returning from fullscreen movies.
 Fixed issue with opaque property not taking effect properly.
 Fixed issue with streaming playback not working player control.
 Fixed issue with player control not preparing movies after changing filename.
 Changed player loadState property to a set, as it should be.
- release-35 (2011-03-21)* MW Fixed memory leak in backgroundPattern support.
 Fixed crash when doing 'ask' without a 'titled' clause.
 Fixed file access mode when doing 'open file' with no mode.
- release-36 (2011-03-25)* MW Fixed issue with iphonePick initial index not working on iPhone
- release-37 (2011-03-31)* MW Added support for 'library' to specialFolderPath.
 Added support for two different modes to iphonePick
 Fixed bug with iphoneClearTouches crashing in some cases
 Fixed bug with iphoneClearTouches preventing mouse messages in some cases.
 Fixed bug with the last opaque group always grabbing touch messages.
- 4.6.1-dp-2 (2011-04-06)* MW Integration of iOS engine branch into desktop.
 Added support for dbMysql database driver
 Added support for native control coords at native resolution.
 Added support for 'style' parameter to iphonePick
 Added support for iphoneExportImageToAlbum
 Added support for heading tracking (digital compass)
 Added support for iphoneApplicationIdentifier
 Fixed bug in simulator causing paths beginning with '/' not to be redirected correctly (9438)
 Fixed bug with iphonePick not scrolling to index on iPad (9461)
 Fixed startup crash on iOS 3.1.3 devices.
- 4.6.1-rc-1 (2011-04-19)* MW Added support for pdf printing
 Fixed bug with dbSqlite returning incorrect data in some cases
- 4.6.1-gm-1 (2011-04-25)* MW Fixed bug with mouseLoc being vertically displaced.
 Fixed bug with delayed processing of touches to native scroller
 Fixed bug with mouseUp being sent instead of mouseRelease on a cancelled touch.
 Fixed bug with closeStack/closeCard message not called after shutdown.
- 4.6.1-gm-2 (2011-05-04)* MW Fixed bug causing app to crash on exit if global variables used (9526)
- 4.6.2-dp-1 (2011-06-01)* MW Added support for iphoneSetKeyboardType to ask dialog (9556)
 Fixed bug causing url operations to fail after pick list display (9529)
 Fixed bug with incorrect return value from url chunk when an error occurs (9549)
 Fixed crash on fetching text property of UITextField if not previously initialized (9564)
- 4.6.1-rc-1 (2011-06-08)* MW No changes.
- 4.6.2-rc-2 (2011-06-15)* MW No changes.
- 4.6.2-gm-1 (2011-06-20)* MW Fixed bug with reversal of red/blue in bitmap effects.

<i>4.6.3-dp-1 (2011-07-01)</i>	MM No changes.
<i>4.6.3-dp-2 (2011-07-11)</i>	MM Fixed bug with splash landscape screens jumping to portrait during app initialisation (9601).
<i>4.6.3-dp-3 (2011-07-13)</i>	MM No changes.
<i>4.6.3-rc-1 (2011-07-15)</i>	MM No changes.
<i>4.6.3-gm-1 (2011-07-19)</i>	MM No changes.
<i>4.6.3-gm-2 (2011-07-26)</i>	MM No changes.
<i>4.6.4-dp-1 (2011-08-10)</i>	MM Updated iPhonePicker to support multi-column pickers.
<i>4.6.4-dp-2 (2011-08-16)</i>	MM Added support for the mouse function. Added support for multiline native input control.
<i>4.6.4-dp-3 (2011-08-22)</i>	MM Added support for the date picker. Altered the engines interaction with the main iOS run loop. Fixed redraw issue on iOS 5 (bug 9639)
<i>4.6.4-rc-1 (2011-08-26)</i>	MM Added support for the networkInterfaces property. Fixed bug with import snapshot producing flipped images (9692).
<i>4.6.4-rc-2 (2011-09-02)</i>	MM No changes.
<i>4.6.4-gm-1 (2011-09-06)</i>	MM Fixed bug with iPhoneClearTouches being called from touch handlers (9683). Fixed bug with the initial value not being scrolled to with iPad pickers (9708).
<i>4.6.4-gm-2 (2011-09-09)</i>	MM No changes
<i>4.6.4-gm-3 (2011-09-15)</i>	MM No changes.
<i>5.0.0-dp-1 (2011-09-16)</i>	MM The graphics architecture has been reworked with support for software, CoreGraphics and OpenGL accelerated rendering modes added. See the main release notes for full details. Support for iOS 3 dropped.
<i>5.0.0-dp-2 (2011-09-22)</i>	MM Fixed bug with native scroller's not passing through touch messages (9738). Fixed rendering issue with iOS 5 ask dialogs (9730). Added support for iOS 5 simulator. Updated builds to include both ARM v6 and ARM v7 architectures.
<i>5.0.0-dp-3 (2011-09-29)</i>	MM Fixed bug - lockText property does not interact with keyboard activation correctly on iOS (9610). Fixed bug - nested controls don't receive touch messages (9620). Fixed bug - transition from fullscreen videos back to LiveCode causes jump (9466). Fixed bug - initial splash screen wrong when iPad face-up (9601). Fixed bug - visual effect in rect (hide/show) doesn't work on iOS. Fixed bug - incorrect view used when setting parameters on switch to OpenGL/UIKit type views (including contentScale - causes OpenGL view to not respect UseDevRes). Added new function "iPhoneSetRedrawInterval"
<i>5.0.0-dp-4 (2011-10-03)</i>	MM Fixed bug – text shifted down a pixel relative to 4.6.4 (9760). Fixed bug – native scrollers block all touch messages after cancelling a touch (9775).

- 5.0.0-rc-1 (2011-10-06) MM Fixed bug - move does not work correctly on iOS (9781).
Fixed bug iPhonePick returns obscure characters (9773).
Engine is now built using iOS 5.0 SDK.
Update iPhonePick and iPhoneDate so that the display of
“Cancel” and “Done” buttons can be controlled.
- 5.0.0-rc-2 (2011-10-08) MM Fixed bug - crash when using iOS 5 simulator on Lion.
Fixed bug - allowed orientations not set to plist settings on
startup on iPad.
Fixed bug - black screen on iOS5 in opengl compositor mode.
- 5.0.0-gm-1 (2011-10-10) MM Fixed bug - screen updates disabled during auto rotation when
redraw interval in use (causes black screen) (9780).
Fixed bug - visual effects don't take into account the device res
(9796).
- 5.0.1-dp-1 (2011-10-19) MM Fixed bug - visual effects between stacks do not ensure target
stack is resized correctly before playing on mobile.
Fixed bug - rendering artefacts when in non-retina mode on
retina device.
Fixed bug - crash when matching unlock screen with effect with
'lock screen'. (9802).
Fixed bug - visual effects play very fast. (9809).
Fixed bug - visual effects not working when transitioning from
card to stack (9811).
Fixed bug - crash when setting redraw interval back to zero
(9814).
Fixed bug - export snapshot produces inverted images in
landscape mode. (9816).
Fixed bug - make sure launch image is displayed with the correct
orientation (9823).
- 5.0.1-dp-2 (2011-10-26) MM Implemented activity indicator.
Implemented media picker.
Updated play command to support playback of files in iPod
library.
Fixed bug - translucent status bar style causes stack to shift up
incorrectly on iPad.
Fixed bug - PDF printing fails on iOS4 (9827).
Fixed bug - area visual effects where either top or left of rect is
negative cause incorrect rendering on iOS (9831).
- 5.0.1-dp-3 (2011-11-07) MM Fixed bug - checking for the sound is done causes apps to crash
(9835).
Fixed bug – date picker does not allow the selection of dates
before 1970 (9848).
Updated native browser control to send new message
“browserLoadRequested”.
- 5.0.1-rc-1 (2011-11-16) MM No changes.
- 5.0.1-rc-2 (2011-11-21) MM Fixed bug – no upper limit on volume (9873).
Fixed bug – play command crashes after several uses (9862).
Fixed bug – crash when using visual effects and
iphoneSetRedrawInterval.

<i>5.0.1-gm-1 (2011-11-23)</i>	MM No changes.
<i>5.0.2-dp-1 (2011-11-25)</i>	MM No changes.
<i>5.0.2-rc-1 (2011-12-02)</i>	MM No changes.
<i>5.0.2-gm-1 (2011-12-12)</i>	MM Fixed bug – showController ignored by play video on second running on iOS 5.0 (9892). Fixed bug – mobilePickPhoto swaps between front and rear cameras on iOS 5.0 (9902).
<i>5.5.0-dp-1 (2011-02-13)</i>	MM Re-factored sensor support. Added support for rotation sensor. Added support for local notifications. Added support for push notifications. Added support for custom URL schemes. Added support for text message composition. Added support for vibration. Added support for busy indicators. Fixed bug - crash when printing to pdf with drop shadows (9888). Fixed bug - scroller limited to 16-bit content rect (9899). Fixed bug – rotate command causes crash (9909). Fixed bug – RTF text does not display correctly (9974). Fixed bug – right wrapping margins incorrect (9982). Fixed bug – play sound on channel next has delay (9916). Fixed bug – play command crashes when passed multiple items (9983).
<i>5.5.0-dp-2 (2011-02-27)</i>	MM Added support for in-app advertising. Fixed bug - groups do not receive mouseDown messages after they are first shown (10018). Fixed bug - after a visual effect mouse messages pass through a group (9868). Fixed bug - calling mobileSetAllowedOrientations doesn't force the interface orientation (10020). Fixed bug - pickers do not return 0 on cancel (9999).
<i>5.5.0-dp-3 (2012-03-09)</i>	MM Fixed bug - selected item in pick list on iPad returns 0 (10036). Fixed bug - pushNotificationReceived skipped on application launch (10042). Fixed bug - the sound stores the path to files that do not exist instead of done (10021). Fixed bug - iphoneSetStatusBarStyle "opaque" changes to back to default status bar (10033). Fixed bug - activity indicator placed in incorrect location on retina display (9957). Fixed bug - junk graphic names in simulator (10038). Fixed bug - screen black when orientation changed (10048). Fixed bug - clicking "Ok" in an iOS ask dialog with no text entered returns "Cancel" (9970). Fixed bug - Ask dialog does not provide editable default value (9930).
<i>5.5.0-rc-1 (2012-03-14)</i>	MM Removed support for in app advertising.

- Fixed bug - push Notification Crashes in certain circumstances (10076).
 Fixed bug - data returned from ask dialog is prepended with a space character (10084).
- 5.5.0-rc-2 (2012-03-16) MM Fixed bug - not specifying a type crashes mobilePickDate.
 5.5.0-gm-1 (2012-03-20) MM Fixed bug – app crash on iOS 5.1 using play command (10104).
 5.5.0-gm-2 (2012-03-23) MM Fixed bug - play command crashes on iOS devices running 4.2 or earlier.
 Fixed bug - bold style doesn't always apply (10116).
 Fixed bug - setting UseDeviceResolution doesn't force a complete screen redraw.
 Fixed bug – single iPad pickers do not return the correct values.
- 5.5.0-gm-3 (2012-03-26) MM No changes.
 5.5.1-dp-1 (2012-04-05) MM Re-instated support for in-app advertising.
 Fixed bug – graphic effects can cause crashes (10146).
- 5.5.1-dp-1 (2012-04-05) MM Fixed bug - picker is not positioned correctly on retina devices (10139).
 Fixed bug - crash when displaying picker in openField from first field in stack (10187).
 Fixed bug – photos picked from camera always in landscape orientation (10192).
 Fixed bug – mobileAdCreate no longer requires all parameters to be specified.
 Updated ad support to use latest inneractive APIs.
- 5.5.1-rc-1 (2012-05-10) MM Added support for address book access.
 Updated ad support to use latest inneractive APIs.
- 5.5.1-rc-2 (2012-05-11) MM Added phonehome, phonework and phoneotherfax for contact support.
- 5.5.1-rc-3 (2012-06-01) MM Updated the default compositor settings used by the acceleratedRendering for retina iPads.
 Fixed bug - mobile controls can remain in list after deleted (10203).
 Fixed bug – get URL does not return error message in result and error page delivered by server (10243).
 Fixed bug - calling mobileshowContact directly after mobilePickContact does not show the contact (10213).
 Fixed bug - iOS Apps do not run on iPhone 3 with iOS 4.2.1 (10224).
 Fixed bug – crash on rotating device after deleting an ad.
 Fixed bug – adLoaded message no longer being sent.
- 5.5.1-rc-4 (2012-06-15) MM Fixed bug – exit on startup when running on iOS 6.0 devices.
 Fixed bug - javascript execution in UIWebView doesn't work correctly in iOS 5 (10013).

- 5.5.1-gm-1 (2012-06-19) MM Updated ad support to use latest inneractive ad APIs.
- 5.5.2-dp-1 (2012-08-17) MM Reworked engines internal structure to use to co-operative threads.
Fixed bug – crash if JavaScript garbage collector is called on wrong thread. Resolves issues related to web views and ads.
Fixed bug - visual effects flicker when redrawInterval set.
- 5.5.2-rc-1 (2012-08-31) MM Fixed bug – wait in startup process causes hang (10340).
Fixed bug - blendlevel renders incorrectly in OpenGL mode (10341).
Fixed bug – images not correctly copied for simulator builds.
- 5.5.2-rc-2 (2012-09-07) MM Fixed bug – calling put from simulator does not write to console on OS 10.8 (10320).
- 5.5.2-gm-1 (2012-09-11) MM No changes.
- 5.5.2-gm-2 (2012-09-13) MM No changes.
- 5.5.3-rc-1 (2012-09-26) MM Fixed bug - picker is not positioned correctly on Retina devices (10139).
Fixed bug – print to PDF causes crash (10248).
Fixed bug – temporary folder ends with slash (10279).
Fixed bug – app launched from notifications crash (10391).
Fixed bug – date picker ignores step parameter (10402).
Fixed bug – media picker causes hang (10406).
Added support for new iOS 6.0 rotation handling.
Added two new browser properties canBounce and scrollingEnabled (enhancement request 10304).
- 5.5.3-rc-2 (2012-10-09) MM Fixed bug – shift key is always pressed when keyboard first appears (9801).
Fixed bug – picker created by option menu shows stray characters (10254).
Fixed bug – delayRequests causes blank pages on iOS 6 (10422).
Fixed bug – portrait native UI dialogs cause landscape only apps to exit (10434).
Fixed bug – temporary folder includes stray final character (10435).
Fixed bug – busy indicator placed incorrectly if invoked from preOpen messages(10441).
Fixed bug – sort international does not work with German text (10445).
Fixed bug – incorrect splash screen shown briefly on iPhone 5 (10448).
- 5.5.3-rc-3 (2012-10-19) MM Fixed bug – mouseColor is always 0,0,0 (10102).
Fixed bug – device orientation returns incorrect value in orientationChanged message (10143).
Fixed bug – return key does not dismiss ask dialog (10175).
Fixed bug – landscape pickers positioned incorrectly on iPhone 5 (10463).
- 5.5.3-gm-1 (2012-10-25) MM Fixed bug – ask dialog always returns cancel (10491).
Fixed bug – date picker never returns cancel (10494).
Added support for the effective working screenRect to take into

		account any keyboard that is visible.
<i>5.5.3-gm-2 (2012-10-31)</i>	MM	No changes.
<i>5.5.4-gm-1 (2013-02-14)</i>	MM	Added iOS 6.1 simulator builds. Updated Armv7 engine to iOS 6.1.
<i>5.5.5-gm-1 (2013-05-21)</i>	MM	Fixed bug – use of deprecated UDID function prevents submission to app store (10895).
<i>5.5.5-gm-2 (2013-05-29)</i>	MM	No changes.

iOS Deployment Change History

<i>pre-alpha-3 (2010-03-04)</i>	MW	Initial version.
<i>pre-alpha-4 (2010-03-05)</i>	MW	Bundle identifier setting no longer lost on reload
<i>pre-alpha-5 (2010-03-11)</i>	MW	Project settings are no longer lost when adding/removing files
<i>pre-alpha-10 (2010-08-12)</i>	MW	Added support for configuring SDK roots Added support for adding folders of files to the app bundle.
<i>pre-release-14 (2010-11-10)</i>	MW	Added support for ad-hoc and store profiles Added support for specifying a splash screen Added support for copying in icons of different resolutions Added support for plist configuration
<i>release-17 (2010-12-01)</i>	MW	Fixed issue with app bundle not being deleted before rebuilding Integrated plugin's functionality into IDE Simulate start/stop buttons replaced by single menubar 'Simulate' button Deploy button replaced by standard 'Save as Standalone Application' action Plist editor integrated as new Standalone Builder pane Simulator selection moved to Simulator Version menu item of Development menu SDK configuration moved to 'Mobile Support' pane of preferences Added support UIFileSharingEnabled plist tag Added ability to choose device type for simulator (iPad/iPhone) Fixed issue with launch image filenames not being correctly computed (and thus failing to copy into the bundle)
<i>release-18 (2010-12-10)</i>	MW	Added 'Simulate' menu item to menubar
<i>release-19 (2010-12-16)</i>	MW	Simulator options now remembered as global preferences Simulator options filtered by minimum version and device family in Standalone Settings. Appropriate warnings and messages added when invalid folders are included in the app bundle via 'Copy Files'
<i>release-20 (2010-12-18)</i>	MW	Improved UI for orientation settings in standalone builder. Fixed issue with wrong provisioning profile being included when more than 9 are installed. Fixed issue with Simulate getting confused with some stack names.
<i>release-21 (2010-12-21)</i>	MW	MinimumOSVersion now correctly included in plist
<i>release-22 (2011-01-07)</i>	MW	Added support for DataGrid Added support for UIPrerenderedIcon plist tag
<i>release-23 (2011-01-14)</i>	MW	No changes

<i>release-24 (2011-01-24)</i>	MW Added support for including revZip, revXML and dbSqlite externals (to be improved later).
<i>release-25 (2011-01-30)</i>	MW No changes
<i>release-26 (2011-02-04)</i>	MW No changes
<i>release-27 (2011-02-08)</i>	MW No changes
<i>release-28 (2011-03-04)</i>	MW Added support for iOS 4.3 simulator and device builds Improved code-signing identity detection and use
<i>release-29 (2011-03-09)</i>	MW Added support for including custom fonts (iOS 3.2+) Added support for including custom externals Fixed issue with deploying to 4.2 simulator
<i>release-30 (2011-03-13)</i>	MW Removed 'Exits on Suspend' option from settings pane and forced to always be YES.
<i>release-31 (2011-03-15)</i>	MW No changes.
<i>release-32 (2011-03-16)</i>	MW Fixed issue where not setting the bundle version explicitly would block the Application Loader from uploading an app.
<i>release-33 (2011-03-17)</i>	MW Fixed issue with identities containing non-ASCII characters not working, Fixed issue with splash image requiring a relative path in educational and personal editions.
<i>release-34 (2011-03-18)</i>	MW No changes.
<i>release-35 (2011-03-21)</i>	MW No changes.
<i>release-36 (2011-03-21)</i>	MW No changes.
<i>release-37 (2011-03-31)</i>	MW Added support for fast simulator builds (iOS4.0+) Added support for mobileStandaloneSaved / savingMobileStandalone messages.
<i>4.6.1-dp-2 (2011-04-06)</i>	MW Added support for including dbMySQL.
<i>4.6.1-rc-1 (2011-04-19)</i>	MW Added support for including PDF Printer.
<i>4.6.1-gm-1 (2011-04-25)</i>	MW No changes.
<i>4.6.1-gm-2 (2011-05-04)</i>	MW No changes.
<i>4.6.2-dp-1 (2011-06-01)</i>	MW Implemented new external build mechanism for device builds.
<i>4.6.2-rc-1 (2011-06-08)</i>	MW No changes.
<i>4.6.2-rc-2 (2011-06-15)</i>	MW No changes.
<i>4.6.2-gm-1 (2011-06-20)</i>	MW No changes.
<i>4.6.3-dp-1 (2011-07-01)</i>	MM No changes.
<i>4.6.3-dp-2 (2011-07-11)</i>	MM Added support for UTF-8 app names.
<i>4.6.3-dp-3 (2011-07-13)</i>	MM No changes.
<i>4.6.3-rc-1 (2011-07-15)</i>	MM No changes.
<i>4.6.3-gm-1 (2011-07-19)</i>	MM No changes.
<i>4.6.3-gm-2 (2011-07-26)</i>	MM Updated SDK version checking to be more permissive, allowing for building with Lion and newer versions of Xcode.
<i>4.6.4-dp-1 (2011-08-10)</i>	MM No changes.
<i>4.6.4-dp-2 (2011-08-16)</i>	MM No changes.
<i>4.6.4-dp-3 (2011-08-22)</i>	MM No changes.
<i>4.6.4-rc-1 (2011-08-26)</i>	MM No changes.
<i>4.6.4-rc-2 (2011-09-02)</i>	MM Fixed bug with with building device externals.
<i>4.6.4-gm-1 (2011-09-06)</i>	MM No changes
<i>4.6.4-gm-2 (2011-09-09)</i>	MM No changes
<i>4.6.4-gm-3 (2011-09-15)</i>	MM No changes.

<i>5.0.0-dp-1 (2011-09-16)</i>	MM No changes.
<i>5.0.0-dp-2 (2011-09-22)</i>	MM Added support for ARM v6 and ARM v7 architectures. Added support for iOS 5 simulator.
<i>5.0.0-dp-3 (2011-09-29)</i>	MM Updated standalone builder with new orientation settings. Updated standalone builder to allow the specifying of icons and splash screens of particular sizes. Updated standalone builder to allow the choice of build type (Arm v6, Arm v7, Universal).
<i>5.0.0-dp-4 (2011-10-03)</i>	MM Fixed bug with iPad icons not being named incorrectly. Fixed bug with build type setting being ignored.
<i>5.0.0-rc-1 (2011-10-06)</i>	MM Tightened up layout of standalone builder pane so it now fits on smaller monitors.
<i>5.0.0-rc-2 (2011-10-08)</i>	MM No changes.
<i>5.0.0-gm-1 (2011-10-10)</i>	MM No changes.
<i>5.0.1-dp-1 (2011-10-19)</i>	MM No changes.
<i>5.0.1-dp-2 (2011-10-26)</i>	MM Updated template plists to remove deprecated entry CFBundleIcon.
<i>5.0.1-dp-3 (2011-11-07)</i>	MM No changes.
<i>5.0.1-rc-1 (2011-11-16)</i>	MM Fixed bug with device builds getting confused by externals built for 5.0 simulator.
<i>5.0.1-rc-2 (2011-11-21)</i>	MM No changes.
<i>5.0.1-gm-1 (2011-11-23)</i>	MM No changes.
<i>5.0.2-dp-1 (2011-11-25)</i>	MM No changes.
<i>5.0.2-rc-1 (2011-12-02)</i>	MM No changes.
<i>5.0.2-gm-1 (2011-12-12)</i>	MM No changes.
<i>5.5.0-dp-1 (2012-02-13)</i>	MM Updated Standalone Builder to include required entries for push notifications and custom URL schemes.
<i>5.5.0-dp-2 (2012-02-27)</i>	MM Updated signing process to include the required entitlements for push notifications.
<i>5.5.0-dp-3 (2012-03-09)</i>	MM Fixed bug – OpenGL settings are not preserved in Standalone Builder (10060). Added support for Xcode 4.3.
<i>5.5.0-rc-1 (2012-03-14)</i>	MM No changes.
<i>5.5.0-rc-2 (2012-03-16)</i>	MM No changes.
<i>5.5.0-gm-1 (2012-03-20)</i>	MM No changes.
<i>5.5.0-gm-2 (2012-03-23)</i>	MM Updated Standalone builder to add support for iOS 5.1.
<i>5.5.0-gm-3 (2012-03-26)</i>	MM Fixed bug – standalone application <u>builder</u> fails during initialization process. Fixed bug – standalones do not include copied files. Fixed bug – hi-res iPad icon not displayed.
<i>5.5.1-dp-1 (2012-04-05)</i>	MM No changes.
<i>5.5.1-dp-2 (2012-05-04)</i>	MM Fixed bug – initial iPad orientation now defaults to portrait.
<i>5.5.1-rc-1 (2012-05-10)</i>	MM No changes.
<i>5.5.1-rc-2 (2012-05-11)</i>	MM Fixed typo in Preferences stack preventing the setting of the path to the iOS 4.0 SDK.
<i>5.5.1-rc-3 (2012-06-01)</i>	MM No changes.
<i>5.5.1-rc-4 (2012-06-15)</i>	MM Added support for deploying to iOS 6.0 simulator.
<i>5.5.1-gm-1 (2012-06-19)</i>	MM Included files missing iOS 6.0 simulator files.

5.5.2-dp-1 (2012-08-17)	MM	Added support for new zip format externals.
5.5.2-rc-1 (2012-08-31)	MM	No changes.
5.5.2-rc-2 (2012-09-07)	MM	No changes.
5.5.2-gm-1 (2012-09-11)	MM	No changes.
5.5.2-gm-2 (2012-09-13)	MM	No changes.
5.5.3-rc-1 (2012-09-26)	MM	Removed support for 4.0, 4.1 and 4.3 simulators. Updated mobile preferences to support multiple Xcode installs. Updated device builds to use the iOS 6.0 SDK where possible. Added support for 4 inch displays.
5.5.3-rc-2 (2012-10-09)	MM	Fixed bug – pList does not include iOS 6 SDK entries (10428).
5.5.3-rc-3 (2012-10-19)	MM	No changes.
5.5.3-gm-1 (2012-10-25)	MM	No changes.
5.5.3-gm-2 (2012-10-31)	MM	No changes.
5.5.4-gm-1 (2013-02-14)	MM	Added support for iOS 6.1 device and simulator builds.
5.5.5-gm-1 (2013-05-21)	MM	No changes.
5.5.5-gm-2 (2013-05-29)	MM	No changes.

Document History

Revision 1 (2010-03-04)	MW	Initial version.
Revision 2 (2010-03-05)	MW	Added documentation for new iPhonePhotoPick parameters
Revision 3 (2010-03-11)	MW	Improved consistency of syntax specifications and use Refined documentation for touch events Added new section about mouse events Added new section on restrictions to dynamic features Restructured headings to make sure PDF index works
Revision 4 (2010-03-18)	MW	Added section on orientation handling Added section on location handling Refined statements about the mouseLoc Refined description of touch handling with regard to hit-testing Clarified support for dynamic chunks Added section on email composition Added section file handling Clarified blocking behavior of non-file url's
Revision 5 (2010-03-29)	MW	Added section on system alerts Added section on sound support Added section on url launching Added section on font querying Added description of <i>engine</i> parameter to specialFolderPath
Revision 6 (2010-04-12)	MW	Revised setting up your system with regard iPad support Added section on hardware and system version querying
Revision 7 (2010-08-12)	MW	Revising initial sections to include details of SDK configuration and requirements. Revised 'Sound file support' section to include 'the sound'. Added 'Video file support' section. Revised 'Non-file url' section to include 'libUrlDownloadToFile' Revised 'The revMobile Plugin' section to include changes to UI. Revised 'Projects and Files' section to include details about adding folders.

<i>Revision 8 (2010-09-16)</i>	MW	Rebranded from revMobile to iOS Deployment Rebranded from rev* to LiveCode Removed section on dynamic language features as no longer relevant.
<i>Revision 9 (2010-11-10)</i>	MW	Various edits to improve language. Expanded section on url commands Added section on visual effects Added section on status bar configuration Revised 'The Deployment Plugin' section Revised the non-test deployment section Added a section on the plist editor Added a section on launch images Added a section on splash images
<i>Revision 10 (2010-12-01)</i>	MW	Rewrote and reorganised initial sections to reflect new integration into the IDE. Rewrote section on orientation handling. Added section on native controls and further sub-sections on browser and scroller controls. Added section of locale and system language query support. Revised the play video section.
<i>Revision 11 (2010-12-04)</i>	MW	Added section on 'Engine Version'
<i>Revision 12 (2010-12-10)</i>	MW	Corrected <code>iphoneControlDestroy</code> to <code>iphoneControlDelete</code> Corrected <code>declearationRate</code> to <code>decelerationRate</code> Corrected description of <code>flashScrollIndicator</code> Added a section on common control properties and actions Added section on out-of-bounds group scrolling Added section on noteworthy changes Updated browser control section Updated movie playback section Updated non-file URL section Updated orientation handling section to describe how to lock orientations to a specific set on startup
<i>Revision 13 (2010-12-16)</i>	MW	Correct description of 'the sound' Added section on 'copy files restrictions' Added section on 'encryption compliance' Updated keyboard section with new messages
<i>Revision 14 (2010-12-19)</i>	MW	Revised section on orientation handling Added a note about URL format to non-file URL access section Added note about nesting to ask/answer dialog section Added a note about 'go in window' to stacks/windows section Added a note about changes to out-of-bounds scrolling Updated keyboard section with new commands Updated out-of-bounds scroll section with details of new properties.
<i>Revision 15 (2010-12-22)</i>	MW	Added section on multi-channel sound support. Updated non-file URL access with details of <i>the httpHeaders</i> .
<i>Revision 16 (2011-01-07)</i>	MW	Updated video playback section to describe how to loop Updated 'what doesn't work' to mention painting tools

<i>Revision 17 (2011-01-14)</i>	MW	Updated browser control section with new properties Updated resolution handling section to mention <i>iphoneDeviceScale()</i>
<i>Revision 18 (2011-01-24)</i>	MW	Added section of configuring the idle timer. Added section on externals. Updated section on what does/what doesn't work to include externals correctly.
<i>Revision 19 (2011-01-30)</i>	MW	Added a section on snapshot capabilities Added a section on querying camera capabilities Added a section on handling pending interactions Updated native controls section to mention control listing and naming Updated section on visual effects to mention new flip behavior
<i>Release 20 (2011-02-04)</i>	MW	Corrected description of <i>mediaPlaybackRequiresUserAction</i>
<i>Release 21 (2011-02-08)</i>	MW	No changes
<i>Release 22 (2011-03-04)</i>	MW	Added mention of <i>iphoneSystemIdentifer()</i> to hardware querying section. Added reference to 4.3 SDK in installation section.
<i>Release 23 (2011-03-09)</i>	MW	Added section on native 'player' control Added section on native 'input' control Added section on network reachability tracking Added section on including custom fonts Added section on including custom externals Updated section on video playback to mention playing sections of video Updated section on multi-channel sound to mention pause, resume, status and preparing.
<i>Revision 24 (2011-03-13)</i>	MW	Updated section on email composition Updated noteworthy changes section Replaced all curly double quotes with plain double quotes Corrected <i>borderStyle</i> 'round' to be 'rounded'
<i>Revision 25 (2011-03-15)</i>	MW	Improved notes on iOS version compatibility of native player control.
<i>Revision 26 (2011-03-16)</i>	MW	Clarified <i>iphonePick</i> command behavior.
<i>Revision 27 (2011-03-17)</i>	MW	Corrected <i>iphoneComposeMail</i> syntax.
<i>Revision 28 (2011-03-18)</i>	MW	Corrected <i>iphoneComposeEmail</i> to <i>iphoneComposeMail</i> Corrected <i>content</i> to <i>filename</i> in native player control. Updated section on <i>iphonePickPhoto</i> to mention iPad behavior. Updated section on native input control to mention changes. Updated section on native player control to mention changes. Clarified that <i>iphonePick</i> indices are 1-based. Changed support for native player control to be iOS 4.0+.
<i>Revision 29 (2011-03-21)</i>	MW	Updated screenshots as appropriate.
<i>Revision 30 (2011-03-25)</i>	MW	No changes.
<i>Revision 31 (2011-03-31)</i>	MW	Updated section on <i>iphonePick</i> to mention new behavior. Updated section on <i>specialFolderPath</i> to mention <i>library</i> . Added section on fast simulator builds. Added section on standalone saving messages.

<i>Revision 32 (2011-04-06)</i>	MW	Updated section on <code>iphonePick</code> to mention <code>style</code> parameter. Updated section on engine version to mention integration. Updated section on <code>iphoneUseDeviceResolution</code> to mention native control support. Updated section on location tracking to incorporate support for heading tracking. Updated section on photo picking to mention support for saving images to albums. Updated section on hardware query support to be about runtime environment and to include <code>iphoneApplicationIdentifier</code> .
<i>Revision 33 (2011-04-19)</i>	MW	No changes.
<i>Revision 34 (2011-04-25)</i>	MW	No changes.
<i>Revision 35 (2011-05-04)</i>	MW	No changes.
<i>Revision 36 (2011-06-01)</i>	MW	Updated section on 'Choosing an SDK' to reflect need for iOS 4.3 SDK for device builds. Updated section on ask dialog to mention use of keyboard type.
<i>Revision 37 (2011-06-08)</i>	MW	No changes.
<i>Revision 38 (2011-06-15)</i>	MW	No changes.
<i>Revision 39 (2011-06-20)</i>	MW	No changes.
<i>Revision 40 (2011-07-01)</i>	MM	No changes.
<i>Revision 41 (2011-07-11)</i>	MM	No changes.
<i>Revision 42 (2011-07-13)</i>	MM	No changes.
<i>Revision 43 (2011-07-15)</i>	MM	No changes.
<i>Revision 44 (2011-07-19)</i>	MM	No changes.
<i>Revision 45 (2011-07-26)</i>	MM	No changes.
<i>Revision 46 (2011-08-10)</i>	MM	Updated section Modal Pick-Wheel support.
<i>Revision 47 (2011-08-16)</i>	MM	Added section Multi-line Input Control – <code>UITextView</code> .
<i>Revision 48 (2011-08-22)</i>	MM	Added section Date picker support.
<i>Revision 49 (2011-08-26)</i>	MM	No changes.
<i>Revision 50 (2011-09-02)</i>	MM	No changes.
<i>Revision 51 (2011-09-06)</i>	MM	No changes.
<i>Revision 52 (2011-09-09)</i>	MM	No changes.
<i>Revision 53 (2011-09-15)</i>	MM	No changes.
<i>Revision 54 (2011-09-16)</i>	MM	Updated section 'Choosing an SDK'.
<i>Revision 55 (2011-09-22)</i>	MM	Updated section 'Choosing an SDK'. Updated section 'Configuring LiveCode'.
<i>Revision 56 (2011-09-29)</i>	MM	Updated section “Setting plist options”. Added section “Managing redraws”.
<i>Revision 57 (2011-10-03)</i>	MM	No changes.
<i>Revision 58 (2011-10-06)</i>	MM	Updated section 'Choosing an SDK'. Updated section 'Modal Pick-Wheel Support'. Updated section 'Date Picker Support'. Added section 'In App Purchasing'.
<i>Revision 59 (2011-10-08)</i>	MM	No changes.
<i>Revision 60 (2011-10-10)</i>	MM	No changes.
<i>Revision 61 (2011-10-19)</i>	MM	No changes.
<i>Revision 62 (2011-10-26)</i>	MM	Added section “Media picker support” Added section “Activity indicator”

		Updated section “Basic sound playback support”.
<i>Revision 63 (2011-11-07)</i>	MM	Updated section “Media picker support”.
		Updated section “Browser control -UIWebView”.
<i>Revision 64 (2011-11-16)</i>	MM	No changes.
<i>Revision 65 (2011-11-21)</i>	MM	No changes.
<i>Revision 66 (2011-11-23)</i>	MM	No changes.
<i>Revision 67 (2011-11-25)</i>	MM	No changes.
<i>Revision 68 (2011-12-02)</i>	MM	Fixed documentation error in section “Video playback support”
<i>Revision 69 (2011-12-12)</i>	MM	No changes.
<i>Revision 70 (2012-02-13)</i>	MM	Updated section “Accelerometer support”.
		Updated section “Location and heading tracking”.
		Added section “Local notifications”.
		Added section “Push notifications”
		Added section “Application icon badge support”.
		Added section “Text messaging”.
		Added section “Busy indicator”.
		Added section “Vibration support”.
		Added section “Sensor tracking”.
<i>Revision 71 (2012-02-27)</i>	MM	Added section “In App Advertising”.
		Updated section “Local Notifications”.
<i>Revision 72 (2012-03-09)</i>	MM	Updated section “Choosing an SDK”.
<i>Revision 73 (2012-03-14)</i>	MM	Removed section “In App Advertising”
<i>Revision 74 (2012-03-16)</i>	MM	No changes.
<i>Revision 75 (2012-03-20)</i>	MM	No changes.
<i>Revision 76 (2012-03-23)</i>	MM	Updated section “Choosing an SDK”.
<i>Revision 77(2012-03-26)</i>	MM	No changes.
<i>Revision 78(2012-04-05)</i>	MM	Added section “In App Advertising”.
<i>Revision 79(2012-05-04)</i>	MM	Updated section “In App Advertising”.
		Added section “File Attributes”.
<i>Revision 80(2012-05-10)</i>	MM	Added section “Contact Access”.
<i>Revision 81(2012-05-10)</i>	MM	Updated section “Contact Access”.
<i>Revision 82(2012-06-01)</i>	MM	Updated section “Contact Access”.
<i>Revision 83(2012-06-15)</i>	MM	No changes.
<i>Revision 84(2012-06-19)</i>	MM	Updated section “In App Advertising”.
<i>Revision 85(2012-08-17)</i>	MM	Updated section “Noteworthy Changes”.
<i>Revision 86(2012-08-31)</i>	MM	No changes.
<i>Revision 87(2012-09-07)</i>	MM	No changes.
<i>Revision 88(2012-09-11)</i>	MM	No changes.
<i>Revision 89(2012-09-13)</i>	MM	No changes.
<i>Revision 90(2012-09-26)</i>	MM	Updated section “Browser Control”.
		Updated section “Choosing an SDK”.
		Updated section “Configuring LiveCode”.
		Updated section “Noteworthy Changes”.
<i>Revision 91(2012-10-09)</i>	MM	Updated section “Resolution Handling”.
		Added section “Audio session support”.
<i>Revision 92(2012-10-19)</i>	MM	Updated section “System Dialogs – answer and ask”.
<i>Revision 93(2012-10-25)</i>	MM	Updated section “Resolution Handling”.
<i>Revision 94(2012-10-31)</i>	MM	No changes.

Revision 95(2013-02-14) MM Updated section “Choosing an SDK”.
Updated section “Configuring LiveCode”.
Revision 96(2013-05-21) MM No changes.
Revision 97(2013-05-29) MM No changes.